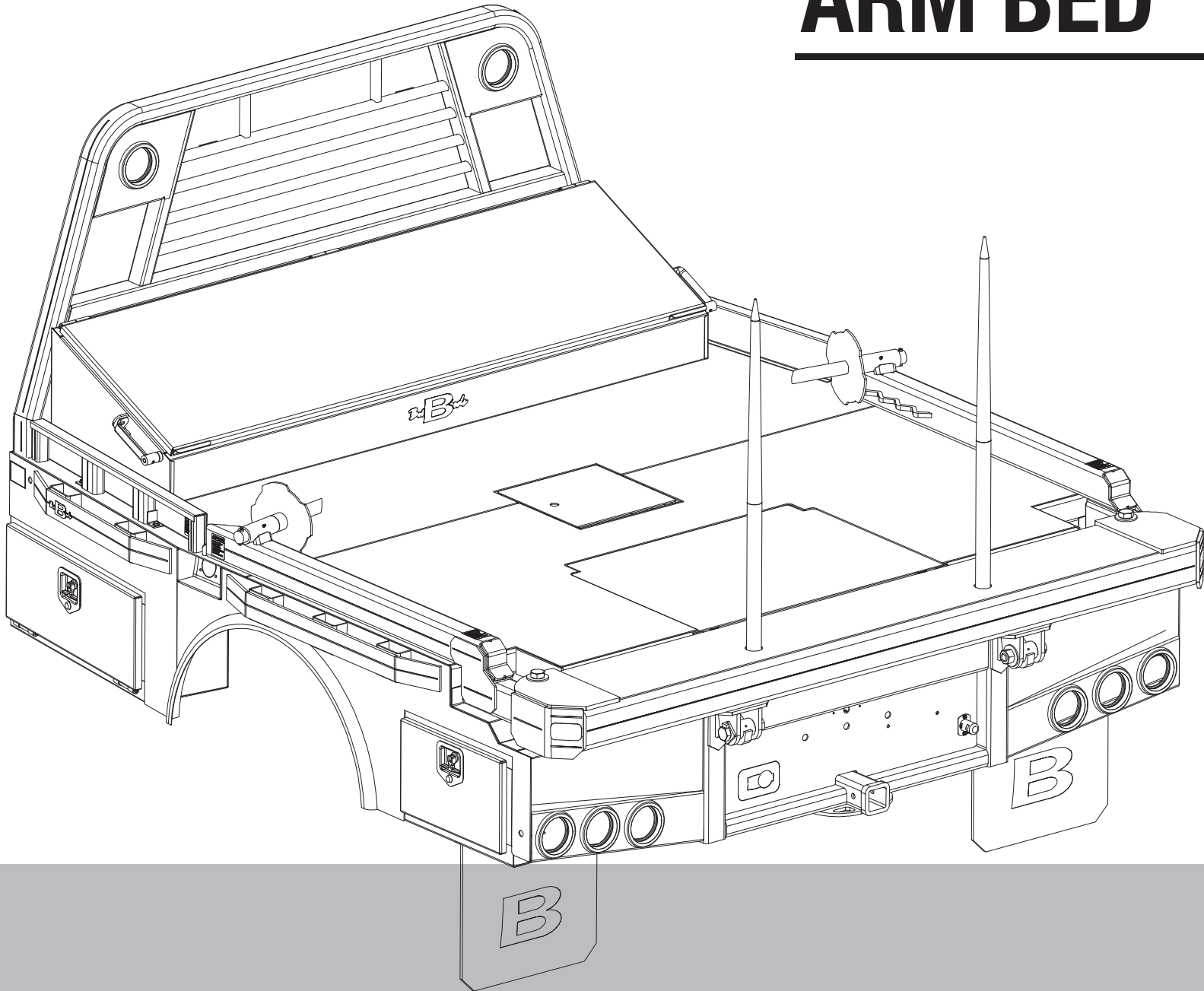


ARM BED



Butler Beds

Thank you for purchasing a Butler Arm Bed.

TO THE OWNER OR OPERATOR:

As with all Harper products, the Butler Beds have been thoroughly tested and built to provide a sturdy, dependable product. The Arm Bed is equipped with live hydraulics, which allows it to be used for a wide range of lifting and hauling tasks. This manual is written as an aid to operating and maintaining the Butler Arm Bed. Read and understand the manual thoroughly before operation to avoid damage to the unit or injury to the operator or bystanders.

An Arm Bed can present hazards to an operator who follows unsafe procedures in either the operation or maintenance of the unit. Therefore, **SAFETY WARNINGS** are present at certain locations in the text. Harper Industries is not responsible for accidents or injuries that result from the misuse or lack of maintenance of the Flatbed.

SYMBOL:



SAFETY WARNING!



MEANING: Failure to understand and obey this warning may result in injury to you or others. Whenever this symbol is used, please pay very close attention to the information presented, and make sure you fully understand. If you do not, contact your dealer or Harper Industries for clarification.

///HARPER INDUSTRIES, INC.

151 E. HWY. 160 Harper, KS 67058
(620) 896-7381 • Fax (620) 896-7129

Toll Free 800-596-2464

Email info@butlerbeds.com

Website www.butlerbeds.com

© 2026 Harper Industries, Inc.

The Butler logo are registered trademarks of Harper Industries, Inc. All other brand and product names are trademarks or registered trademarks of their respective companies.

Statement of Warranty 1/11/2025

Harper Industries, Inc. (HII) warrants to each purchaser of a new Butler Bed from an authorized dealer or representative, that such equipment is free of manufacturer's defects in workmanship and materials which appear while in normal service for a period of ONE YEAR commencing with delivery to the original user.

The obligation of HII under this warranty is expressly limited, at our option, to replacement or repair at a service facility designated by Harper Industries or at the manufacturing plant in Harper, KS. A part will be replaced after inspection discloses it to have been defective. This warranty does not apply to defects caused by damage or unreasonable use (including failure to provide reasonable and necessary maintenance, or by performing functions without genuine Butler Bed accessories) while in the possession of the consumer.

Warranty is limited to parts, labor and ground freight delivery of replacement parts. HII shall not be liable for the consequential damages of any kind, including but not limited to consequential labor costs or transportation charges in connection with replacement or repair of defective parts.

This warranty does not apply to parts subjected to misuse, abuse, alteration, improper or inadequate maintenance, or normal wear.

Harper Industries makes no warranty with respect to trade accessories. They are subject to the warranties of their respective manufacturers (including belts, battery, chains, filters).

ANY IMPLIED OR STATUTORY WARRANTIES, INCLUDING ANY WARRANTY OR MERCHANTABILITY OR FITNESS FOR A PARTICULAR PURPOSE, ARE EXPRESSLY LIMITED TO THE DURATION OF THIS WRITTEN WARRANTY. HII makes no other express warranty, nor is anyone authorized to make any on behalf of HII.

For further information please contact your nearest Butler Bed dealer.

RECORDS

Date of Purchase _____ / _____ / _____

Dealer's Name _____

Dealer's Phone _____

Serial Number Bed _____

Serial Number Pump _____

**SCAN
& REGISTER**

- Scan the QR code with your smart phone
- Register the details of your new Butler Arm Bed
- We'll send you a new hat to welcome you to the Butler family



SCAN FOR YOUR FREE BUTLER HAT!
(Remove sticker after registering)

Table of Contents

OPERATOR SECTION

| | |
|---|-------|
| To the Owner or Operator..... | 1 |
| Warranty Statement..... | 2 |
| Table of Contents..... | 3 |
| Specifications..... | 4 |
| Feature Identification..... | 5 |
| Safety Guidelines & Operating Instructions..... | 6 |
| Maintenance..... | 7 |
| Hydraulics, Toolbox, & Power Unit Mounting.... | 8 |
| Controls Wiring & Pairing..... | 9-10 |
| Spikes in Crosstube..... | 11 |
| Troubleshooting & Amp Draw Chart..... | 12-13 |

PARTS SECTION

| | |
|---|-------|
| Side Rails, Arms & Crosstubes..... | 16 |
| Arm & Crosstube Service Parts..... | 17 |
| Bed Service Parts..... | 18 |
| Spikes & Spike Holder..... | 19 |
| Decals..... | 20 |
| Cylinders, Lift & Squeeze..... | 21 |
| Hose Charts..... | 22-23 |
| Lights..... | 24 |
| Electrical Harnesses..... | 25-26 |
| Butler to OEM Chassis Adapter Harnesses..... | 27-28 |
| Completing Kit (E/H, Controls & Hardware).... | 29 |
| Controls: Wireless & Corded..... | 30 |
| E/H Unit..... | 31 |
| E/H Schematic..... | 32 |
| Toolboxes..... | 33 |
| Mudflaps..... | 34 |
| Bed Mounting Kits..... | 35 |
| Camera Mounting Brackets..... | 35 |
| Bed Lengths for Cake Feeders..... | 36 |

Specifications

Butler Arm Beds are specifically designed to transport and feed round hay bales.

Model Specifications

| MODEL | A84X84 | A84X101 | A84X108 | A84X113 | A94X101 | A94X108 | A94X113 |
|--------|--------|---------|---------|---------|---------|---------|---------|
| WIDTH | 7'0" | 7'0" | 7'0" | 7'0" | 7'10" | 7'10" | 7'10" |
| LENGTH | 7'0" | 8'5" | 9'0" | 9'5" | 8'5" | 9'0" | 9'5" |

| A94X132 | A94X137 | A96X84 | A96X101 | A96X108 | A96X113 | A96X132 | A96X137 |
|---------|---------|--------|---------|---------|---------|---------|---------|
| 7'10" | 7'10" | 8'0" | 8'0" | 8'0" | 8'0" | 8'0" | 8'0" |
| 11'0" | 11'5" | 7'0" | 8'5" | 9'0" | 9'5" | 11'0" | 11'5" |

Hydraulic System Specifications

| | |
|--------------------------|---|
| HYDRAULIC SYSTEM | Electric over hydraulic |
| SYSTEM PRESSURE | 2800 psi |
| FLOW | 3.32 gpm @ 500 psi: 1.38 gpm @ 2750 psi |
| OIL RESERVOIR CAPACITY | 10 quarts ATF fluid (Dextron III) |
| CYLINDER, SQUEEZE | 1.125" X 2.5" X 6.0" Rephasing 1.125" X 2.75" X 6.0" Rephasing |
| CYLINDER, LIFT | 1.25" X 3" X 20" |
| LIFT CAPACITY (centered) | 2,500 lbs. |

Protective Coating Specifications

| | |
|-------|--------------------------------------|
| PAINT | Heat-cured, polyurethane based paint |
|-------|--------------------------------------|

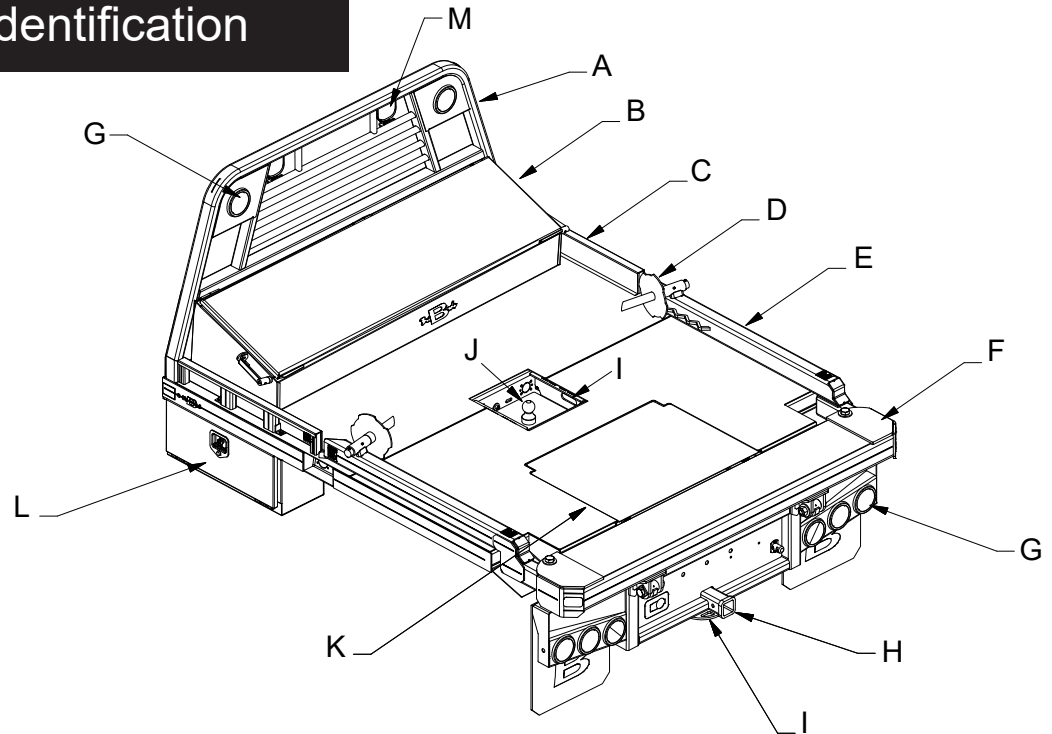
Bed Weights

| ARM | 84x84 | 84x101 | 84x108 | 84x113 | 94x101 | 94x108 | 94x113 | 94x132 | 94x137 | | |
|---------|-------|--------|--------|--------|--------|--------|--------|--------|--------|--|--|
| WEIGHT | 1448 | 1502 | 1528 | 1886 | 1845 | 1950 | 1975 | ? | 2152 | | |
| SKIRTED | 1687 | 1962 | ? | ? | ? | ? | ? | ? | ? | | |

| SPIKE | 80x84 | 84x84 | 84x102 | 84x110 | 84x115 | 94x102 | 94x110 | 94x115 | 94x134 | 94x139 | |
|---------|-------|-------|--------|--------|--------|--------|--------|--------|--------|--------|--|
| WEIGHT | 1283 | 1350 | 1400 | 1500 | 1544 | 1184 | 1614 | 1622 | ? | ? | |
| SKIRTED | | 1199 | 1467 | ? | ? | 1709 | ? | ? | ? | ? | |

| FLATBED | 80x102 | 84x84 | 84x102 | 84x110 | 84x115 | 90x115 | 94x102 | 94x110 | 94x115 | 94x134 | 94x139 |
|---------|--------|-------|--------|--------|--------|--------|--------|--------|--------|--------|--------|
| WEIGHT | 1225 | 1133 | 1180 | ? | ? | 1309 | 1169 | ? | 1334 | ? | 1497 |
| SKIRTED | | 1302 | 1470 | ? | ? | | 1255 | ? | ? | ? | ? |

Feature Identification



A. Headache Rack – protects the rear pickup window.

B. Across-the-bed Toolbox

C. Side rails or Dummy Arms – serve as side rail along with squeeze arms.

D. Spinners – used to unroll hay.

E. Squeeze Arms – squeeze together to grip the bale and lift it onto the flatbed. When the arms are stored they serve as side rails for the flatbed.



SAFETY WARNING!

Do not stand under the squeeze arms when operating the bale pickup unit, even when arms are empty.

F. Crosstube or Pivot – houses the squeeze cylinder and guides the squeeze arms.

G. Lights – LED lighting for stop-tail-turn. (Optional lights in headache rack)

H. Hitch Plate – allows for a 2” square receiver hitch (Class IV) and has holes for hitch pins.

I. Safety Chain Loops – always use safety chains when towing.

J. Gooseneck Hitch – located under a cover plate in the middle of the bed or as a pop up ball.

K. Cylinder Door – Ease of access for replacing and maintaining cylinders.

L. Toolboxes – mount under front of bed on both sides. The Electric/Hydraulic Power unit mounts inside the passenger side toolbox.

M. Work Lights (optional) – lights can be when working at night.

Safety Guidelines

Operator safety is of utmost concern when designing and developing a new piece of equipment. Designers and manufacturers build in as many safety features as possible. However, every year many accidents occur which could have been avoided by a few seconds of thought and a more careful approach to handling equipment. Most accidents can be avoided by observing the precautions in this section. To avoid personal injury, study the safety warnings and cautions listed in this manual and follow them.

General Equipment Safety

- This equipment can be dangerous to children and persons unfamiliar with its operation. The operator should be a responsible adult familiar with farm machinery and trained for this unit.
- Do not attempt to operate equipment under the influence of drugs or alcohol.
- Do not allow persons to operate or assemble this unit until they have read this manual and have developed a thorough understanding of the safety precautions and how the unit works.
- Review the safety warnings and cautions with all users annually.



If you have any questions not answered in this manual or require additional copies, contact your dealer or Harper Industries.

Arm Bed Operation Safety

- Replace any CAUTION, WARNING, DANGER or instruction decal that is not readable or is missing.
- Make sure all safety pins are in place and flatbed mounting bolts are secure to the truck frame.
- Make sure hinges, joints, and sliding parts are well greased, especially during off season to prevent rusting and binding.

- Check with truck dealer for any load limits, additional suspension or tire requirements. The arm bed's lifting capability may exceed the truck's load capacity in some instances.



Hydraulic Safety

 **SAFETY WARNING!** 
Hydraulic system operates under highpressure and escaping fluid can penetrate the skin.



Operating Instructions

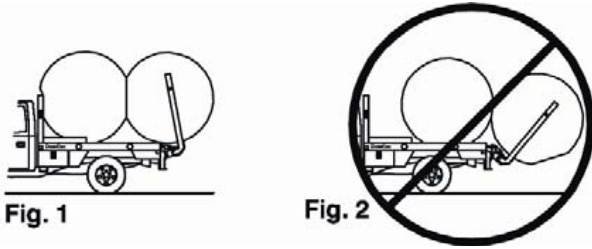
Loading Instructions

- Back truck up to bale with arms open wide.
- Center spikes (spinners) as close as possible to center of bale.
- Squeeze the bale by pushing the IN button on the controller.
- Lift the bale by pushing the UP button on the controller.
- If you are loading 2 bales, release bale once backed up to the 2nd bale.

 **CAUTION** 
DO NOT DROP THE BALE ON THE TRUCK.
Damage to the frame and suspension can result from a dropped bale.

- Repeat to load a second bale.
- Maintain pressure on second bale during transport.

 **CAUTION** 
When hauling one bale make sure there is down pressure on the bale to keep it from moving. Do not release the arms. Maintain constant steady pressure. When hauling two bales make sure the first bale is as far forward as possible (Fig. 1). Carrying a bale behind the bed (Fig. 2) places excessive stress on the cylinder, linkage, and pins.



CAUTION

Do not exceed the GVRW of the truck.

Unloading Instructions

- To unload one bale, push the IN button to maintain squeeze pressure. Push the DOWN button to lower the bale. Once bale is on the ground push the OUT button to release pressure.
- When unloading 2 bales, unload first bale as stated above. Raise arms to remaining bale on truck. Squeeze the bale as close to center as possible. To get a center grip on bale you may need to release the bale and squeeze it again near the center of the bale while it is still on the truck bed.

NOTE: When hauling multiple bales short distances, motor will become hot. Allow motor to cool down in between loading cycles. General rule of thumb is 25% motor on, 75% motor off. This equals about 2 ½ minutes “motor on” in a 10 minute period. Opening the tool box lid may help with the cool down.

Unrolling Instructions

- Position the spinner in the center of the bale.
- Lift the bale off the ground and cut the wrap/string off.
- Lower the bale to make contact with the ground.
- Slowly drive forward letting the ground contact to unroll the bale.
- Bump the down switch to maintain ground contact with the bale.

Storing Of Arms

- Raise arms up to bed. Arms must touch bed before bringing arms to down position. Squeeze to stop.

Arm Bed Winter Use

Keep pivot area clear of debris (hay, foreign material, etc...). Check periodically. Clear if necessary. Frozen hay and debris can cause excessive pressure put on metal parts resulting in operational issues.

Maintenance

Check Daily or Before Use

- Check the hydraulic oil level. Keep the level to “FULL” on the dipstick.
- Examine the hydraulic hoses for leaks with an object such as cardboard.

SAFETY WARNING!

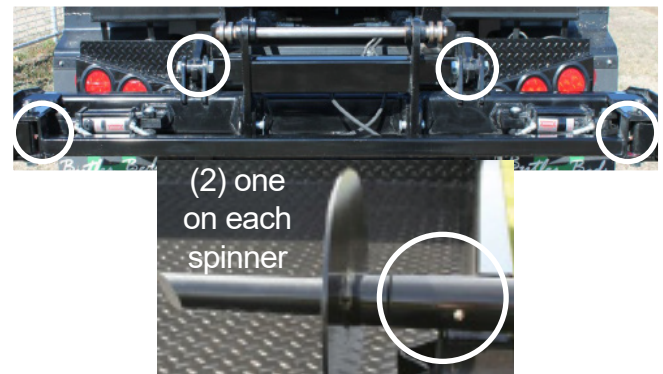
Hydraulic fluid escaping under pressure can penetrate the skin and may cause death if not treated immediately.

Lubrication

- Grease all (6) zerks once a week or more often during heavy use to keep arm bed operating at its best.
- Grease arms, spinners, and pivots as shown in the picture below.

SAFETY WARNING!

Use extreme caution when greasing the flatbed. Completely lower arms to expose rear zerks and turn off ignition.



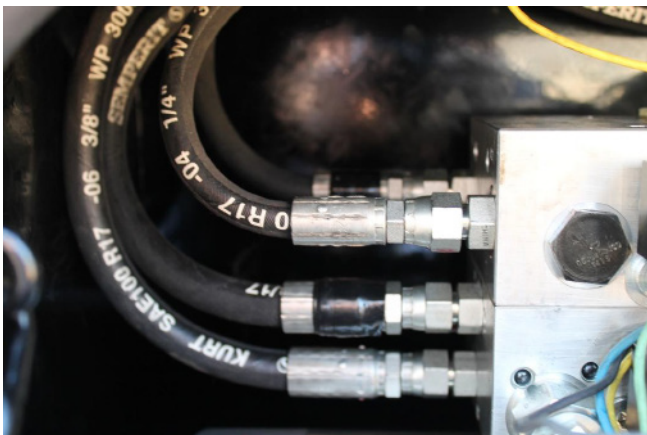
Hydraulics

Hydraulic System

- If the quick-couplers leak, the o-rings may need to be replaced.
- Heat 190° or greater, can be damaging to the hydraulic system. Check for “hot spots” which may indicate a problem.
- Run the bed at least twice a month to prevent valve condensation.

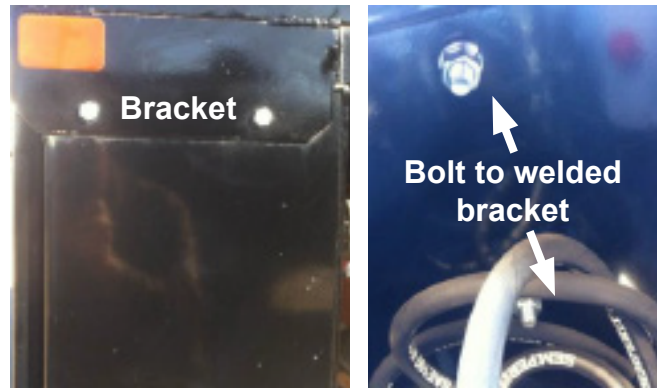
Hydraulic Hose Connections

- 1/4” Hoses (squeeze) attach to top valve body. Taped hose screws into C1.
- 3/8” Hoses (lift) attach to bottom valve body. Taped hose screws into C1.
- After filling with ATF, synchronize arms (Arm Bed) and remove air from lines (Arm & Spike Bed). See Trouble Shooting.



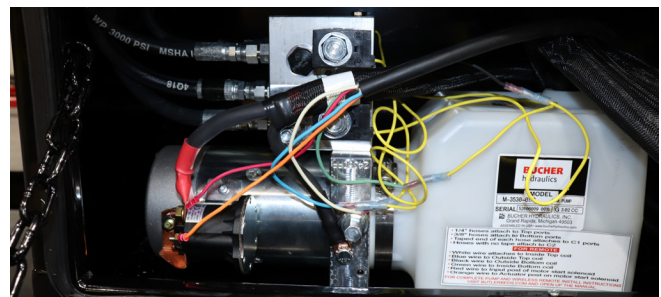
Toolbox Mounting

- Mount the box with the two bolt holes on the short end towards the front. Bolt the top of box to the welded bracket under the bed. All bolts are 3/8”.

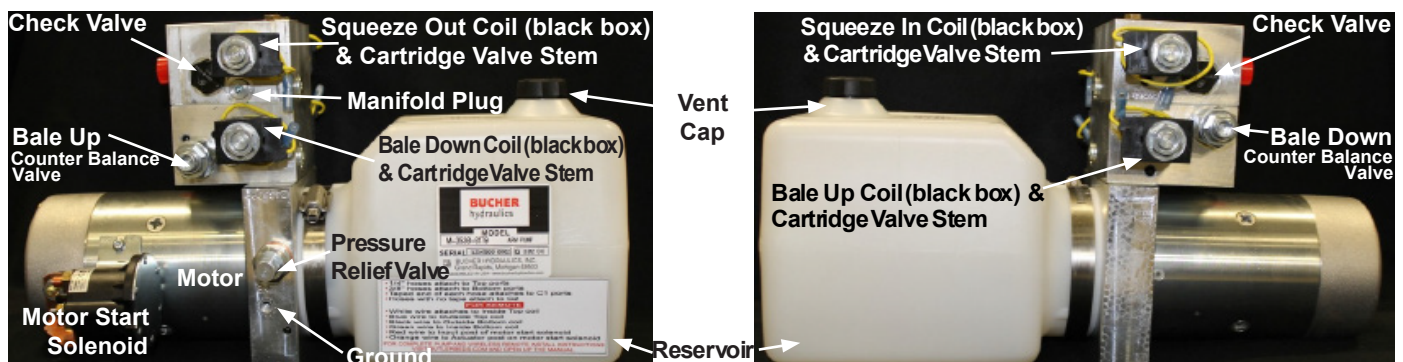


Mounting of Power Unit

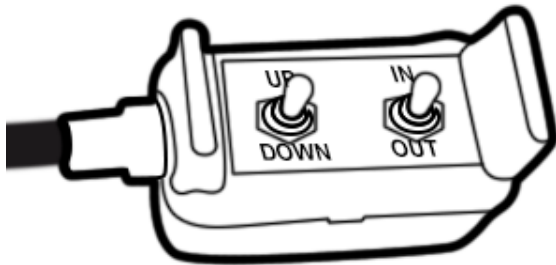
Place power unit in passenger side box with the reservoir facing the cab of the truck. Position the holes in bottom of pump block over holes in bottom of box. Using 3/8” bolts, secure the pump to the box. Run the hydraulic hoses through the rubber grommet in the box. The power unit operates best with a two battery set up. If needed, the second battery can be mounted next to the power unit in the tool box.



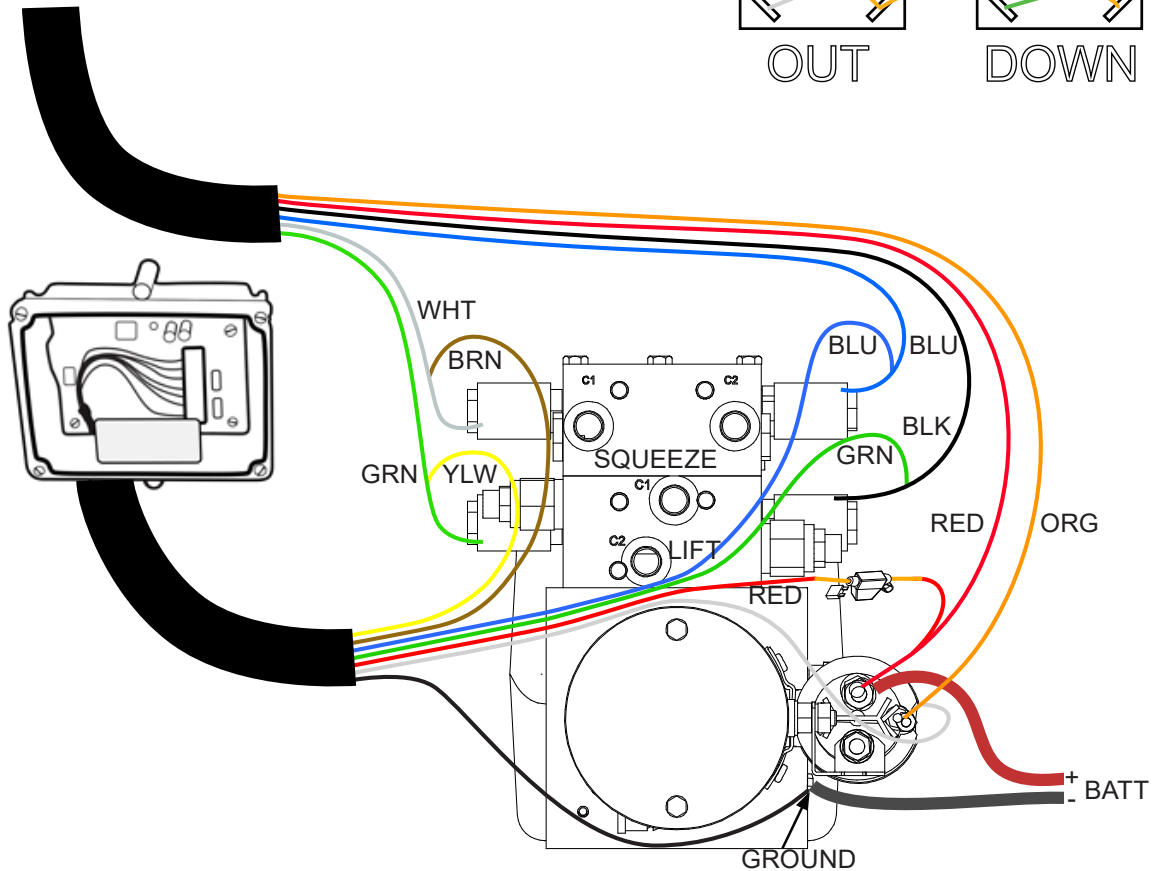
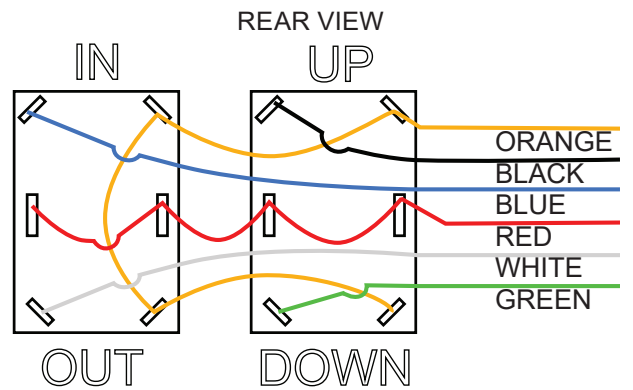
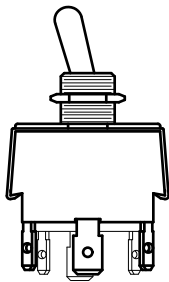
Power Unit Identification



BUTLER ARM CORDED & WIRELESS: BUCHER VALVE

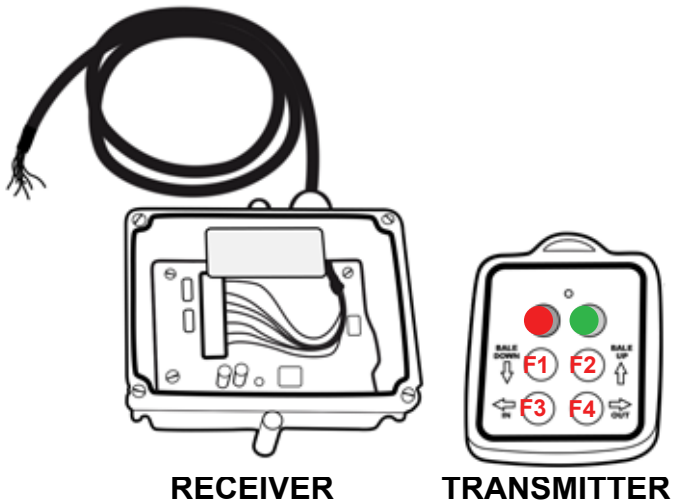


| Parts List | | | |
|------------|-----|--------|--------------------------------|
| ITEM | QTY | PART # | DESCRIPTION |
| 1 | 1 | 232150 | Wired, Hand Control Two Switch |
| 2 | 2 | 232171 | Switch, AB Hand Control |



LODAR: BUTLER ARM BED

*Receiver NOT SOLD separately. Must buy kit.
Transmitter can be purchased individually.



RECEIVER

TRANSMITTER

Pairing (Synching) the Wireless System

1. NO POWER - **receiver**
2. PRESS RED & GREEN *transmitter* buttons until its LED turns off. Release the buttons (it will blink "search" afterwards)
3. POWER - **receiver**
4. HOLD *transmitter* GREEN button until the **receiver** GREEN LED is solid. Release button.
5. Hold the RED button to turn the *transmitter* off. When you turn the *transmitter* back on, it will be synched.

| ITEM | QTY | PART # | DESCRIPTION |
|------|-----|--------|--|
| 1 | 1 | 233008 | *RECEIVER/TRANSMITTER |
| 2 | 1 | 232166 | Transmitter |
| 3 | 1 | 233016 | Receiver/Transmitter Assy (new installs) |

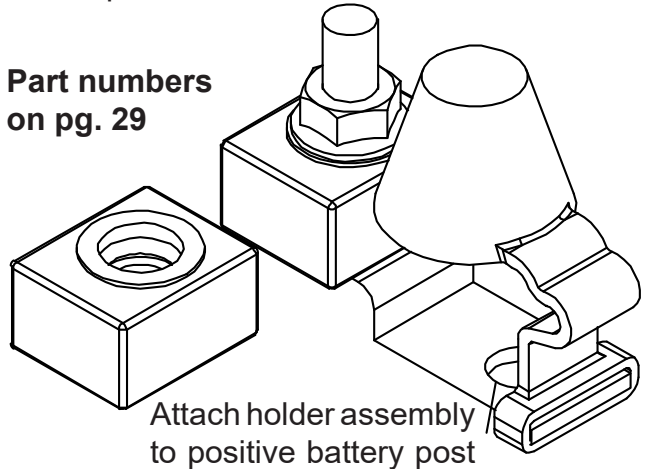
System Fuses

Fuse & Fuse Holder

The 250 amp (Arm Bed) or the 200 amp (Spike Bed) fuse and holder attach to the battery's positive post.

Attach positive cable here

Part numbers on pg. 29



Attach holder assembly to positive battery post

Older Butler Beds may have fuses as shown below. They can be sourced outside the company or upgraded to our "ice cube" style.



Spikes in Crosstube

It is important when using the Arm Bed with Spikes in the crosstube, that the Spikes be parallel with the ground when spiking a bale. Failure to do so can result in structural damage to the bed. Refer to pictures to show correct & incorrect spike positions.

Note: Harper Industries, Inc. warrants each purchaser of a new Butler Bed from an authorized dealer or representative, that such equipment is free of manufacturer's defects in workmanship and materials which appear while in normal service for a period of ONE YEAR commencing with delivery to the original user. Structural damage due from incorrect spike position will NOT be warranted by Harper Industries.

RESULT OF INCORRECT SPIKE POSITION



CORRECT SPIKE POSITION

CORRECT SPIKE POSITION



INCORRECT SPIKE POSITION

INCORRECT SPIKE POSITION



Troubleshooting

The most common problems with a power unit are due to low voltage from a battery, fuse failure, faulty wire or a failing ground connection. To narrow down the problem, connect jumper cables to the pump (positive to input side of solenoid & negative to the ground on pump base). Use a separate good battery (from another vehicle or a new battery). If the pump and bed operate properly, then have the battery tested, check in line fuse and power cord, and/or run ground cable directly to the battery instead of inside the tool box or frame. If the pump does not operate properly with jumper cables, then check solenoid and/or motor.

| PROBLEM | SOLUTION |
|--|--|
| Power unit not responding to remote when toggle is activated | Use test light on remote connections to solenoid. If any connections are not working, the problem is in the remote. If all connections are working, check solenoid. If solenoid is working properly, the problem is in the pump motor. |
| Motor is humming or bed is operating slowly | Pump motor is failing. |
| One of the four operations is not working. Example: bed will lift, lower and squeeze in but will not squeeze out | Check wire on cartridge valve coil for a short or take coil off and activate remote while putting a screwdriver inside coil. If screwdriver does not magnetize to coil, the coil is failing. If coil is magnetizing, then failure is in cartridge valve. |
| Arm Bed arms are not moving in unison (synchronized) (The most common problem after hoses are replaced.) | 1. Squeeze arms together above the welded stops. Assist the arms by hand if needed until they are both at maximum squeeze point. Hold toggle active for 20 seconds in order to clear air from lines. 2. Check rubber bumpers that are on each arm on the opposite side of cylinder hook up point. |
| Bale drops on its own when suspended in the air or will not maintain a tight squeeze | Turn the counter-balance valve ¼ turn clockwise until bale suspends normally. Do not tighten screw all the way in. |
| Arms pivot are not moving fast / pressurizing but not moving | Check for debris in the check valve. Make sure spring plunger is not broken. |

| PROBLEM | SOLUTION |
|---|---|
| Bed will not lift heavier bales/ arms will not release bale when suspended in air | Turn the counter-balance valve ¼ turns clockwise until bale lifts properly. Do not tighten screw all the way in. If problem persists, turn pressure relief set screw in ¼ turn clockwise until bale lifts properly. Do not tighten screw all the way in. If problem still persists then power unit is failing. |
| Bale shutters or falls too fast | Turn the counter-balance valve ¼ turn clockwise until bale goes down properly. Do not tighten screw all the way in. |
| Bale goes down too fast | Turn counter-balance valve ¼ turn counter clockwise until desired speed is achieved. If bale starts to shutter/go down too fast, turn same screw clockwise ¼ turn. |
| Fluid leaking under bed or in tool box | Check hose connection at leak. Tighten or replace if needed. Leaks in tool box are best diagnosed by activating the remote while watching the power unit. Determine where the leak is coming from and replace O-ring / plug / valve if needed. Some leaks are fixed by tightening the plug/valve. Make sure the plastic reservoir is not cracked. |

How to Check

| | |
|----------|--|
| Solenoid | Check the two posts. If posts show voltage, then the solenoid is good. |
| Pump | Make sure there is good voltage to the motor. If motor checks out good check for broken or worn gear. If there is a grinding or metallic noise, the pump needs to be replaced. |
| Motor | Check amp range using chart below. Arm & spike beds draw different amps at different pressures. |

| Bucher Motor Specs. | | |
|----------------------------|-----------------|------------|
| PSI | AMP DRAW | GPM |
| 50 | 96 | 4.59 |
| 250 | 114 | 3.94 |
| 500 | 137 | 3.32 |
| 750 | 159 | 2.86 |
| 1000 | 180 | 2.52 |
| 1250 | 201 | 2.25 |
| 1500 | 221 | 2.03 |
| 1750 | 241 | 1.86 |
| 2000 | 260 | 1.71 |
| 2250 | 279 | 1.59 |
| 2500 | 297 | 1.48 |
| 2750 | 315 | 1.38 |
| 3000 | 332 | 1.28 |

NOTE: The power unit is configured to lift heavier bales. Speed for lighter bales is adjusted by the counter-balance valve. Turn the counter-balance valve set screw counter clockwise until bale will not lift, and then turn the same screw clockwise by ¼ turns until bale will lift properly multiple times.



ARM BED

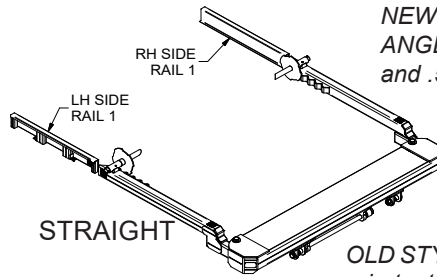
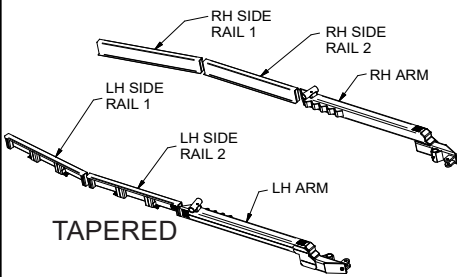
PARTS

Table of Contents

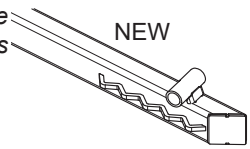
PARTS SECTION

| | |
|--|-------|
| Side Rails, Arms & Crosstubes..... | 16 |
| Arm & Crosstube Service Parts..... | 17 |
| Bed Service Parts..... | 18 |
| Spikes & Spike Holder..... | 19 |
| Decals..... | 20 |
| Cylinders, Lift & Squeeze..... | 21 |
| Hose Charts..... | 22-23 |
| Lights..... | 24 |
| Electrical Harnesses..... | 25-26 |
| Butler to OEM Chassis Adapter Harnesses..... | 27-28 |
| Completing Kit (E/H, Controls & Hardware)..... | 29 |
| Controls: Wireless & Corded..... | 30 |
| E/H Unit..... | 31 |
| E/H Schematic..... | 32 |
| Toolboxes..... | 33 |
| Mudflaps..... | 34 |
| Bed Mounting Kits..... | 35 |
| Camera Mounting Brackets..... | 35 |
| Bed Lengths for Cake Feeders..... | 36 |

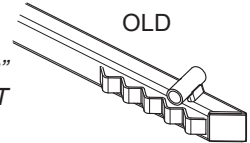
SIDE RAILS, ARMS & CROSSTUBES



NEW ARMS have ANGLED spinner tubes and .5" grip teeth.



OLD STYLE ARMS have 2" grip teeth, and STRAIGHT spinner tubes.



| SIDE RAILS | | | | | | |
|------------|-----------|-----------|-----------|-----------|-----------|------------|
| BED SIZE | BED SHAPE | LH RAIL 1 | RH RAIL 1 | LH RAIL 2 | RH RAIL 2 | Length X |
| A84X84 | Straight | 205232 | 205231 | N/A | N/A | Normal 50" |
| A84X84 | Straight | 205238 | 205237 | N/A | N/A | Short 41" |
| A84X101 | Straight | 205195 | 205194 | N/A | N/A | Normal 50" |
| A84X101 | Straight | 205195 | 205194 | N/A | N/A | 41CF 48" |
| A84X108 | Straight | 205226 | 205227 | N/A | N/A | Normal 50" |
| A84X113 | Straight | 205224 | 205224 | N/A | N/A | Normal 50" |
| A90X108 | Tapered | 205195 | 205194 | 205254 | 205254 | Normal 50" |
| A90X108 | Straight | 205226 | 205227 | N/A | N/A | Normal 50" |
| A90X113 | Tapered | 205195 | 205194 | 205211 | 205241 | Normal 50" |
| A90X113 | Straight | 205224 | 205225 | N/A | N/A | Normal 50" |
| A90X137 | Tapered | 205195 | 205194 | 205195 | 205194 | Normal 50" |
| A90X137 | Straight | 205342 | 205343 | N/A | N/A | Normal 50" |
| A94X84 | Straight | 205232 | 205231 | N/A | N/A | Normal 50" |
| A94X84 | Straight | 205238 | 205237 | N/A | N/A | Short 41" |
| A94X101 | Tapered | 205195 | 205194 | N/A | N/A | Normal 50" |
| A94X101 | Tapered | 205195 | 205194 | N/A | N/A | 41CF 48" |
| A94X101 | Straight | 205195 | 205194 | N/A | N/A | Normal 50" |
| A94X108 | Tapered | 205254 | 205254 | 205195 | 205194 | Normal 50" |
| A94X108 | Straight | 205226 | 205227 | N/A | N/A | Normal 50" |
| A94X113 | Tapered | 205195 | 205194 | 205211 | 205241 | Normal 50" |
| A94X113 | Straight | 205224 | 205225 | N/A | N/A | Normal 50" |
| A94X132 | Tapered | 205195 | 205194 | 205259 | 205260 | Normal 50" |
| A94X132 | Straight | 205347 | 205348 | N/A | N/A | Normal 50" |
| A94X137 | Tapered | 205195 | 205194 | 205195 | 205194 | Normal 50" |
| A94X137 | Straight | 205342 | 205343 | N/A | N/A | Normal 50" |
| A96X84 | Tapered | 205232 | 205231 | N/A | N/A | Normal 50" |
| A96X84 | Tapered | 205232 | 205231 | 205270 | 205270 | Short 41" |
| A96X84 | Straight | 205232 | 205231 | N/A | N/A | Normal 50" |
| A96X101 | Tapered | 205195 | 205194 | N/A | N/A | Normal 50" |
| A96X101 | Tapered | 205195 | 205194 | N/A | N/A | 41CF 48" |
| A96X101 | Straight | 205195 | 205194 | N/A | N/A | Normal 50" |
| A96X108 | Tapered | 205254 | 205254 | 205195 | 205194 | Normal 50" |
| A96X108 | Straight | 205226 | 205227 | N/A | N/A | Normal 50" |
| A96X113 | Tapered | 205195 | 205194 | 205211 | 205241 | Normal 50" |
| A96X113 | Straight | 205224 | 205225 | N/A | N/A | Normal 50" |
| A96X132 | Tapered | 205195 | 205194 | 205259 | 205260 | Normal 50" |
| A96X132 | Straight | 205347 | 205348 | N/A | N/A | Normal 50" |
| A96X137 | Tapered | 205195 | 205194 | 205195 | 205194 | Normal 50" |
| A96X137 | Straight | 205342 | 205343 | N/A | N/A | Normal 50" |

| OLD STYLE ARMS | | | |
|----------------|--------|--------|------------|
| BED SIZE | LH ARM | RH ARM | Length X |
| A84X84 | 205193 | 205192 | Normal 50" |
| A84X84 | 205235 | 205234 | Short 41" |
| A84X101 | 205193 | 205192 | Normal 50" |
| A84X101 | 205333 | 205334 | 41CF 48" |
| A84X108 | 205193 | 205192 | Normal 50" |
| A84X113 | 205193 | 205192 | Normal 50" |
| A90X108 | 205228 | 205221 | Normal 50" |
| A90X113 | 205228 | 205221 | Normal 50" |
| A90X137 | 205228 | 205221 | Normal 50" |
| A94X101 | 205228 | 205221 | Normal 50" |
| A94X101 | 205339 | 205340 | 41CF 48" |
| A94X108 | 205228 | 205221 | Normal 50" |
| A94X113 | 205228 | 205221 | Normal 50" |
| A94X132 | 205228 | 205221 | Normal 50" |
| A94X137 | 205228 | 205221 | Normal 50" |
| A96X84 | 205228 | 205221 | Normal 50" |
| A96X84 | 205267 | 205268 | Short 41" |
| A96X101 | 205228 | 205221 | Normal 50" |
| A96X101 | 205339 | 205340 | 41CF 48" |
| A96X108 | 205228 | 205221 | Normal 50" |
| A96X113 | 205228 | 205221 | Normal 50" |
| A96X132 | 205228 | 205221 | Normal 50" |
| A96X137 | 205228 | 205221 | Normal 50" |

| NEW STYLE ARMS | | | |
|----------------|--------|--------|----------|
| BED SIZE | LH ARM | RH ARM | Length X |
| A84X84 | 205450 | 205449 | 48" |
| A84X84 | 205475 | 205476 | 41" |
| A84X101 | 205450 | 205449 | 48" |
| A84X108 | 205450 | 205449 | 48" |
| A84X113 | 205450 | 205449 | 48" |
| A90X108 | 205450 | 205449 | 48" |
| A90X113 | 205450 | 205449 | 48" |
| A90X137 | 205450 | 205449 | 48" |
| A94X84 | 205450 | 205449 | 48" |
| A94X84 | 205475 | 205476 | 41" |
| A94X101 | 205450 | 205449 | 48" |
| A94X108 | 205450 | 205449 | 48" |
| A94X113 | 205450 | 205449 | 48" |
| A94X132 | 205450 | 205449 | 48" |
| A94X137 | 205450 | 205449 | 48" |
| A96X84 | 205475 | 205476 | 41" |

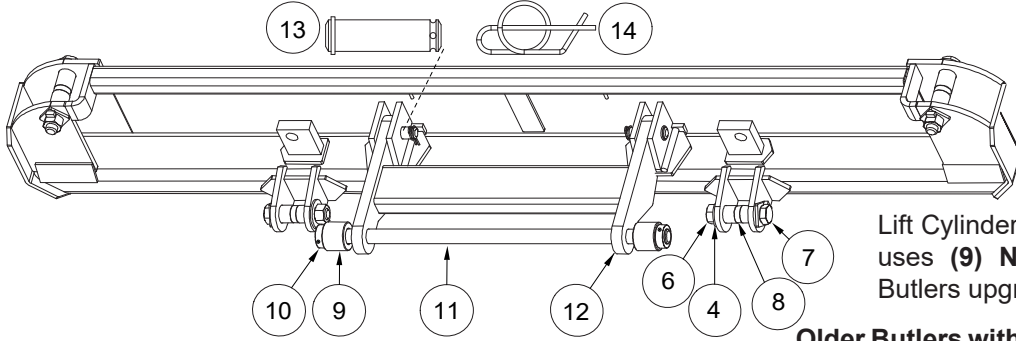
| CROSSTUBE | |
|-----------|--------|
| BED SIZE | PART # |
| A84X84 | 205196 |
| | |
| A84X101 | 205196 |
| | |
| A84X108 | 205196 |
| A84X113 | 205196 |
| A90X108 | 205197 |
| A90X113 | 205197 |
| A90X137 | 205197 |
| A94X101 | 205198 |
| | |
| A94X108 | 205198 |
| A94X113 | 205198 |
| A94X132 | 205198 |
| A94X137 | 205198 |
| A96X84 | 205198 |
| | |
| A96X101 | 205198 |
| | |
| A96X108 | 205198 |
| A96X113 | 205198 |
| A96X132 | 205198 |
| A96X137 | 205198 |

| CROSSTUBE | |
|-----------|--------|
| BED SIZE | PART # |
| A84X84 | 205196 |
| | |
| A84X101 | 205196 |
| A84X108 | 205196 |
| A84X113 | 205196 |
| A90X108 | 205197 |
| A90X113 | 205197 |
| A90X137 | 205197 |
| A94X84 | 205198 |
| | |
| A94X101 | 205198 |
| A94X108 | 205198 |
| A94X113 | 205198 |
| A94X132 | 205198 |
| A94X137 | 205198 |
| A96X84 | 205198 |

| CROSSTUBE 2/SPIKES | |
|--------------------|--------|
| BED SIZE | PART # |
| A84X84 | 205322 |
| | |
| A84X101 | 205322 |
| | |
| A84X108 | 205322 |
| A84X113 | 205322 |
| A90X108 | 205323 |
| A90X113 | 205323 |
| A90X137 | 205323 |
| A94X101 | 205324 |
| | |
| A94X108 | 205324 |
| A94X113 | 205324 |
| A94X132 | 205324 |
| A94X137 | 205324 |
| A96X84 | 205324 |
| | |
| A96X101 | 205324 |
| | |
| A96X108 | 205324 |
| A96X113 | 205324 |
| A96X132 | 205324 |
| A96X137 | 205324 |

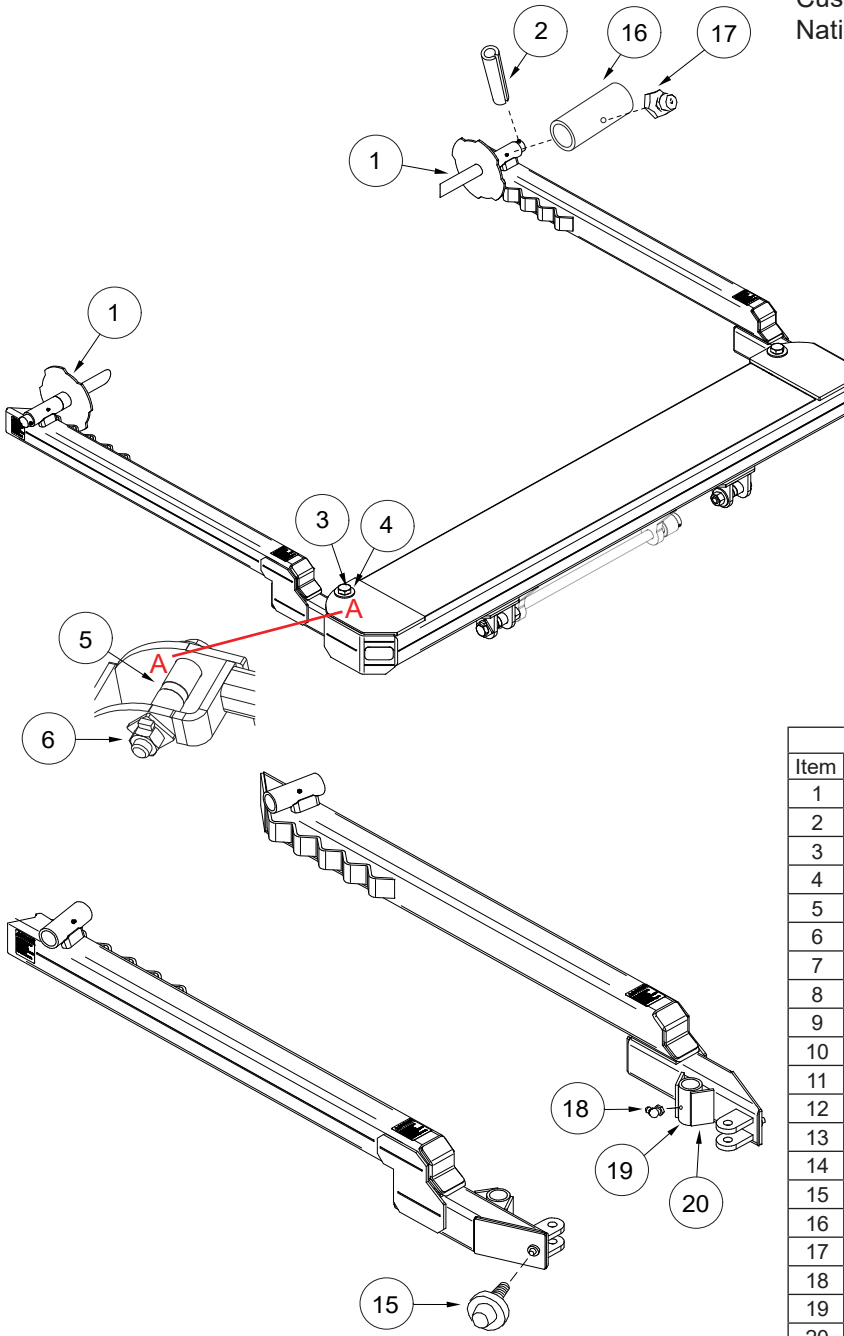
| CROSSTUBE 2/SPIKES | |
|--------------------|--------|
| BED SIZE | PART # |
| A84X84 | 205322 |
| | |
| A84X101 | 205322 |
| A84X108 | 205322 |
| A84X113 | 205322 |
| A90X108 | 205323 |
| A90X113 | 205323 |
| A90X137 | 205323 |
| A94X84 | 205324 |
| | |
| A94X101 | 205324 |
| A94X108 | 205324 |
| A94X113 | 205324 |
| A94X132 | 205324 |
| A94X137 | 205324 |
| A96X84 | 205324 |

ARM & CROSSTUBE SERVICE PARTS



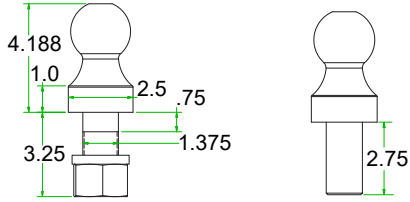
Lift Cylinder rod end connection point now uses **(9) NYLATRON ROLLER**. Older Butlers upgrade to these rollers.

Older Butlers without AB ROLLER SHAFT (11): Customers must source 1-1/4" shaft, cut to fit, & National RA104 bearings.

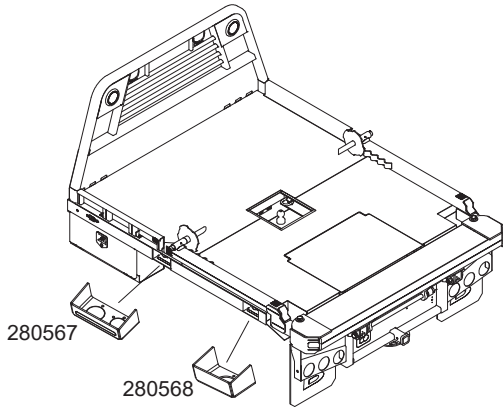


| Parts List | | | |
|------------|-----|--------|---------------------------------------|
| Item | Qty | Part # | Description |
| 1 | 2 | 285026 | Spinners |
| 2 | 2 | 112121 | Roll Pin, 3/8 X 2 |
| 3 | 2 | 110364 | Bolt, 1-8 X 7 Gr5 Zinc |
| 4 | 4 | 110038 | Washer, 1 Flat Zinc |
| 5 | 2 | 280017 | Pin Tube, Arm |
| 6 | 4 | 110601 | Nut, 1-8 Gr5 Zinc |
| 7 | 2 | 110208 | Bolt, 1-8 X 5 Hhcs Gr 5 Zinc |
| 8 | 2 | 280018 | Pin Tube, Cross Frame |
| 9 | 2 | 280170 | Roller, 2.5 X 1.25 X 2 Nylatron |
| 10 | 2 | 112122 | Collar, Lock Id 1.25 3/8-16 Set Screw |
| 11 | 1 | 280160 | Shaft, Ab Roller |
| 12 | 1 | 285017 | Weldment, H-Frame |
| 13 | 1 | 220480 | Pin, 1 X 3.5 |
| 14 | 1 | 102122 | Locking Cotter Ring 1" |
| 15 | 1 | 112124 | Bumper, Arm |
| 16 | 2 | 280014 | Tube, Spinner |
| 17 | 2 | 510174 | Grease Zerk, 1/4-28, Std |
| 18 | 2 | 500230 | Grease Zerk, 1/4-28 90° |
| 19 | 2 | 280013 | Pivot Tube, Squeeze Arm |
| 20 | 4 | 281368 | Mounting Plate (Welded) |

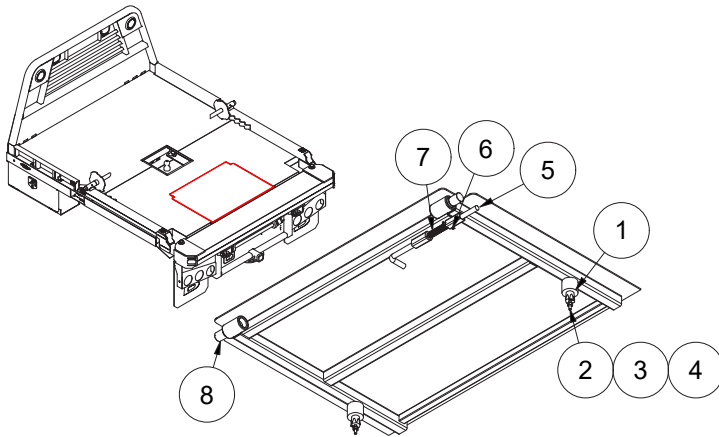
BED SERVICE PARTS



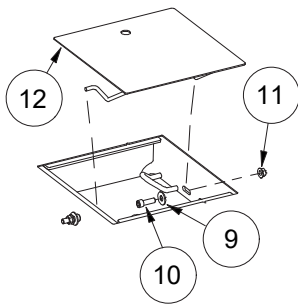
| Part # | Ball Hitch |
|--------|--|
| 212032 | 2.3125" Ball, 1.375 x 3.25" Bolt, 1.00" Rise |
| 281080 | 2.3125" Ball 1.375 x 2.75" Bolt, 1.00" Rise |



| Part # | Fuel Fill Brackets |
|--------|--|
| 280567 | Bracket, Fuel and DEF Fill (Not Painted) |
| 280568 | Bracket, Fuel Fill, C&C Rear (Not Painted) |

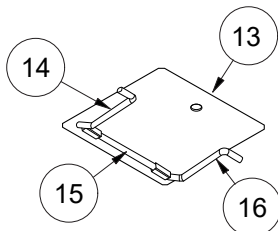


| Cylinder Door Kit 285253 (pins not welded) | | | |
|---|-----|--------|---------------------------------|
| ITEM | QTY | PART # | DESCRIPTION |
| 1 | 2 | 112117 | Door Holder, Rubber and Plastic |
| 2 | 2 | 110406 | Bolt, 1/4-20 X 2.25 |
| 3 | 2 | 110667 | Washer, 1/4 Lock |
| 4 | 2 | 110609 | Nut, 1/4-20 |
| 5 | 1 | 280130 | Rod, Service Door |
| 6 | 1 | 110279 | Roll Pin, 3/16 X 1 1/2 |
| 7 | 1 | 112114 | Spring, Compression 5/8 X 2.75 |
| 8 | 2 | 280155 | Pin, Door |



| New Gooseneck Well Door Kit 205483 (Late 2022 forward) | | | |
|---|-----|--------|----------------------------|
| ITEM | QTY | PART # | DESCRIPTION |
| 9 | 2 | 110244 | Bolt, 1/2-13 X 1.5 Shcs |
| 10 | 2 | 110588 | Nut, 1/2-13 Wiz Flange |
| 11 | 2 | 110658 | Washer, 1/2" Flat Standard |
| 12 | 1 | 285850 | Door, Assy, 5th Wheel |

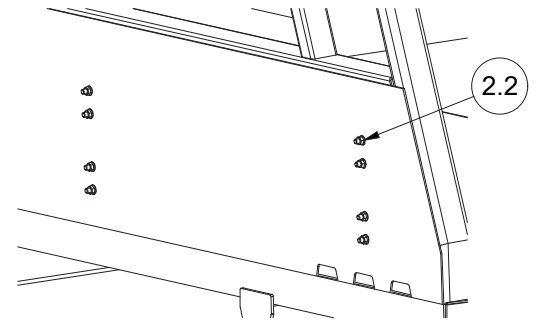
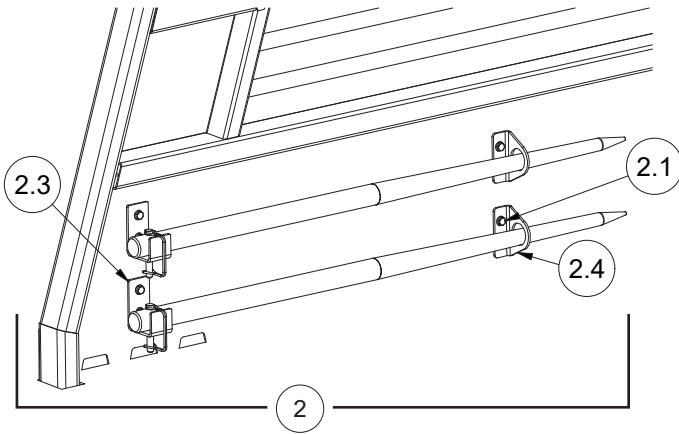
One piece rod with hardware to secure.



| Old Gooseneck Well Door Kit 285252 (2022 & earlier) | | | |
|--|-----|--------|-------------------------|
| ITEM | QTY | PART # | DESCRIPTION |
| 13 | 1 | 285233 | Door, Wa Gooseneck Well |
| 14 | 1 | 280151 | Hinge, Straight Rod |
| 15 | 1 | 280150 | Hinge, Front Rod |
| 16 | 1 | 280154 | Hinge, Rear Rod |

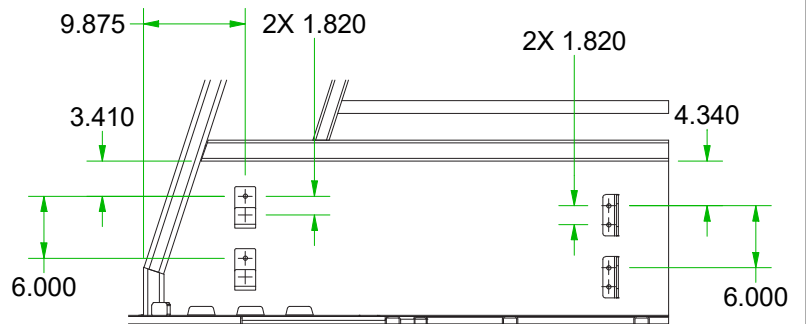
Three piece rod, hinge not welded.

SPIKES & SPIKE HOLDER

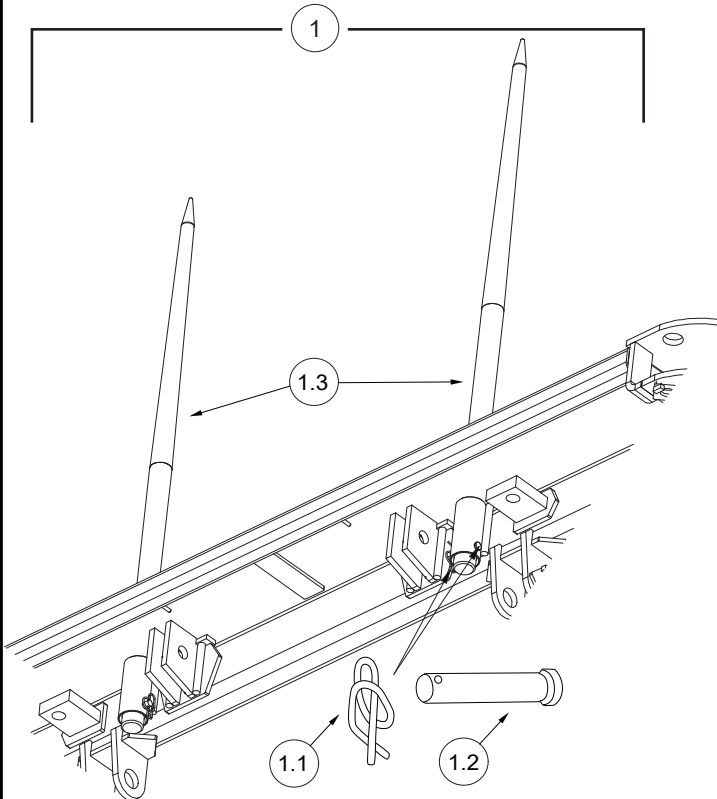


SUGGESTED MOUNTING LOCATIONS

DRILL HOLE $\varnothing 0.375-0.40$



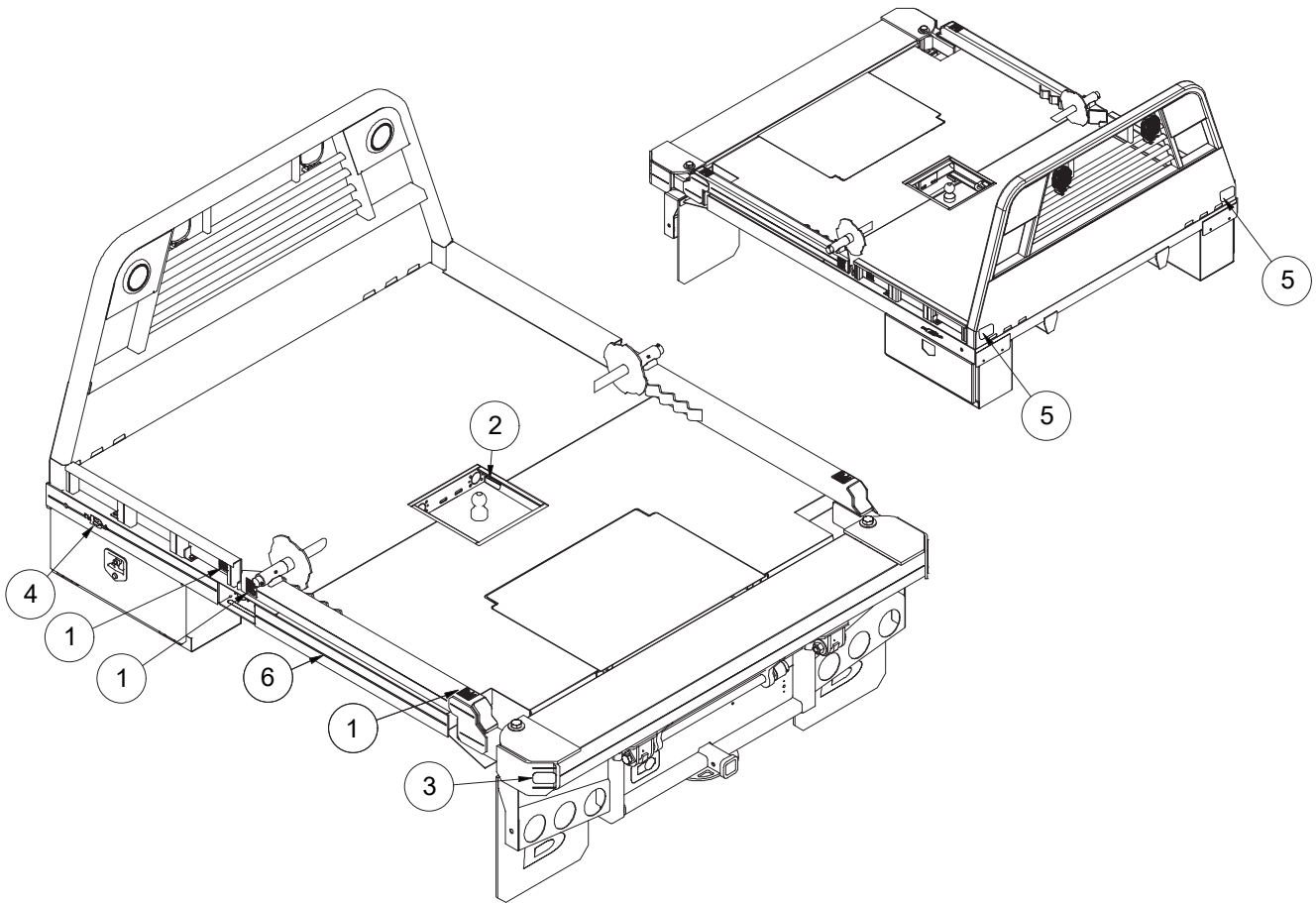
ARM BED SPIKES (PAIR)



Parts List

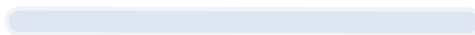
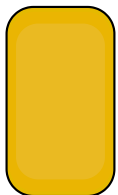
| ITEM | QTY | PART # | DESCRIPTION |
|------|-----|--------|------------------------------|
| 1 | 1 | 205326 | Spikes (Pair, Arm Bed) |
| 1.1 | 2 | 102122 | Locking Cotter Ring 1" |
| 1.2 | 2 | 111214 | Pin, 1/2" Diameter |
| 1.3 | 2 | 212045 | Spike, Butler Arm Bed |
| 2 | 1 | 205369 | Spike Holder Kit |
| 2.1 | 8 | 110440 | Bolt, 3/8-16 X 1, Wiz Flange |
| 2.2 | 8 | 110645 | Nut, 3/8-16 Wiz Flange |
| 2.3 | 2 | 281020 | Bracket, Spike Holder |
| 2.4 | 2 | 281062 | Bracket, Spike Support |

DECALS



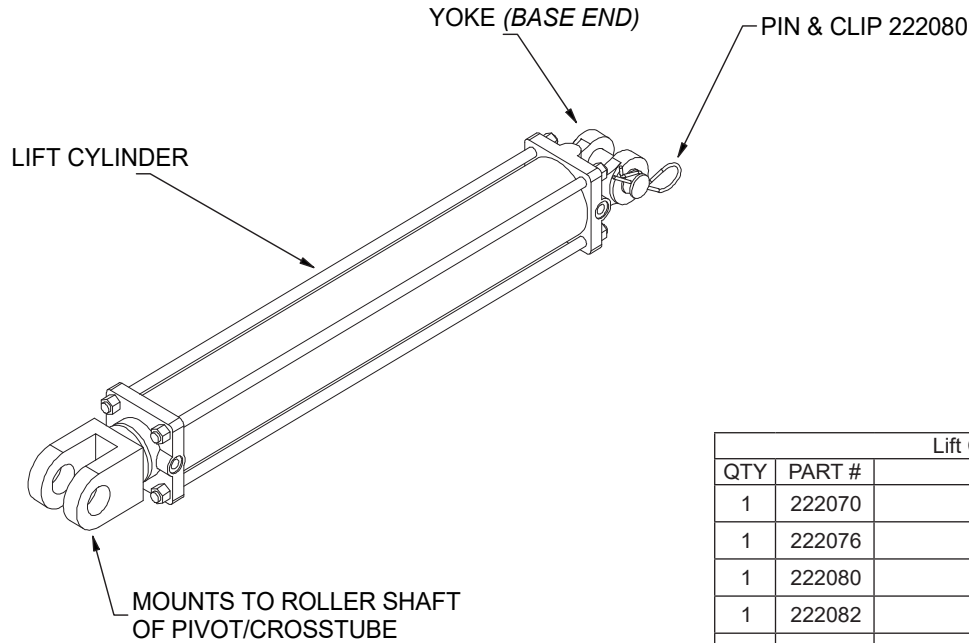
⚠ DANGER
 KEEP AWAY WHILE MACHINE IS IN OPERATION TO REDUCE POSSIBILITY OF SERIOUS PERSONAL INJURY.
 200144

⚠ NOTICE
 MAX TONGUE WEIGHT = 7,500 LBS
 DO NOT EXCEED VEHICLE GVW AND/OR MAX AXLE WEIGHT PER VEHICLE OWNER'S MANUAL
 200472



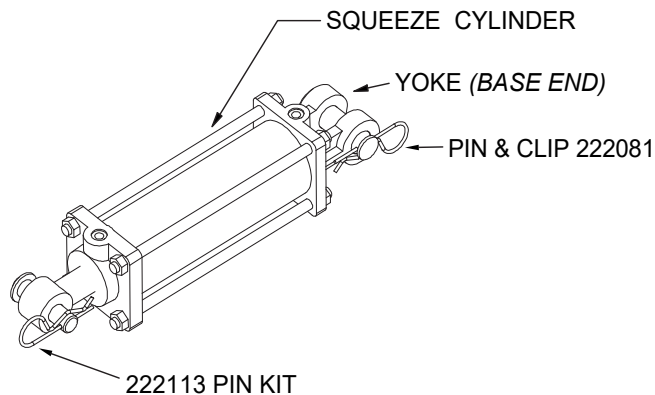
| Parts List | | | |
|------------|-----|--------|-----------------------------------|
| ITEM | QTY | PART # | DESCRIPTION |
| 1 | 6 | 200144 | Decal, Danger |
| 2 | 1 | 200472 | Decal, Gooseneck Tongue Weight |
| 3 | 2 | 202138 | Decal, Red Reflector 2 X 3.5 |
| 4 | 2 | 202140 | Decal, Butler |
| 5 | 2 | 202139 | Decal, Amber Reflector 2 X 3.5 |
| 6 | 1 | 202148 | Decal, Pinstripe, White 150' Roll |

LIFT CYLINDER



| Lift Cylinder Parts List | | |
|--------------------------|--------|---------------------------------|
| QTY | PART # | DESCRIPTION |
| 1 | 222070 | Lift Cylinder (1.25 x 3.0 x 20) |
| 1 | 222076 | Yoke 3.0 Kit |
| 1 | 222080 | Pin & Clip (1.0 x 3.125) |
| 1 | 222082 | Seal Kit 2.0 x 3.0 |
| 1 | 222130 | Clevis, Rod End, Lift Cylinder |

SQUEEZE CYLINDERS

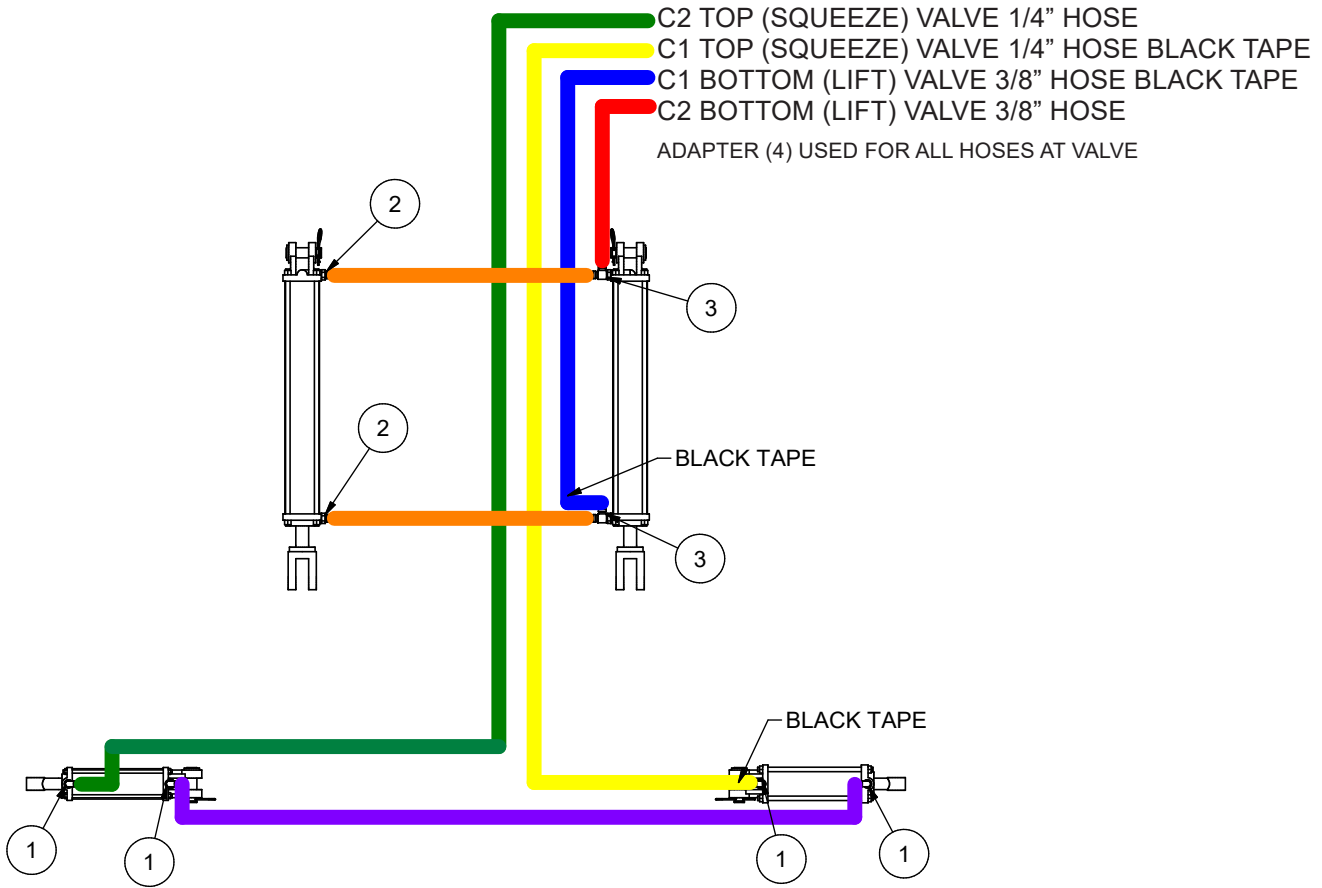


| Squeeze Cylinder Parts List | | |
|-----------------------------|--------|--|
| QTY | PART # | DESCRIPTION |
| 1 | 222066 | NEW 6" Squeeze DRV (1.125 x 2.5 x 6) |
| 1 | 222067 | NEW 6" Squeeze PASS (1.125 x 2.75 x 6) |
| 1 | 222096 | OLD 4" Squeeze DRV (1.125 x 2.5 x 4) |
| 1 | 222097 | OLD 4" Squeeze PASS (1.125 x 2.75 x 4) |

| Service Parts DRV Squeeze Cylinders (4" or 6") | | |
|--|--------|-----------------------|
| QTY | PART # | DESCRIPTION |
| 1 | 222078 | Yoke Kit, 2.5 |
| 1 | 222081 | Pin & Clip 1.0 x 2.75 |
| 1 | 222084 | Seal Kit 1.125 x 2.5 |
| 1 | 222113 | Pin Kit Ø.75 x 2.5 |

| Service Parts PASS Squeeze Cylinders (4" or 6") | | |
|---|--------|-----------------------|
| QTY | PART # | DESCRIPTION |
| 1 | 222079 | Yoke Kit, 2.75 |
| 1 | 222081 | Pin & Clip 1.0 x 2.75 |
| 1 | 222085 | Seal Kit 1.125 x 2.75 |
| 1 | 222113 | Pin Kit Ø.75 x 2.5 |

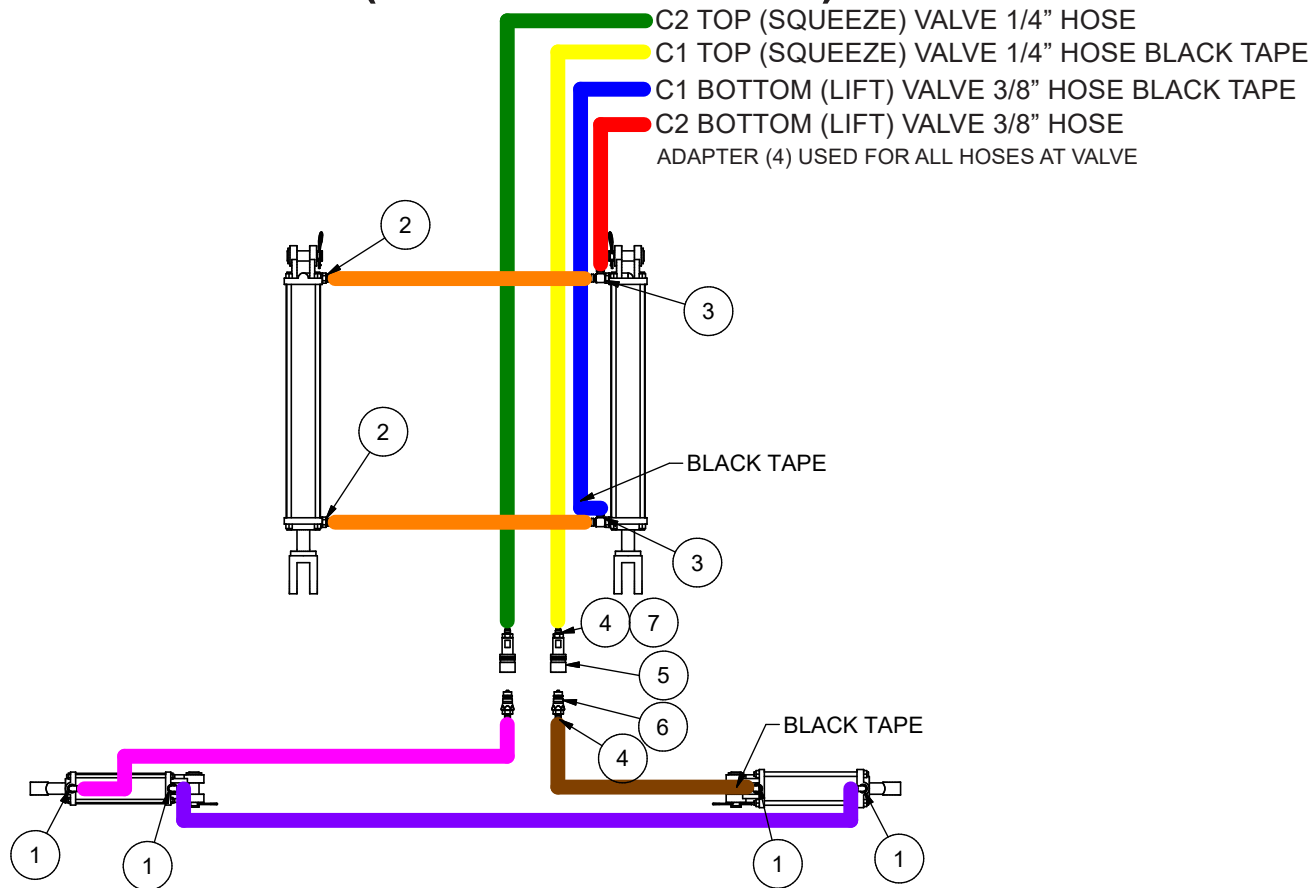
HOSE CHART (NO COUPLERS)



| FITTING TABLE | | | |
|---------------|-----|--------|---------------------|
| ITEM | QTY | PART# | DESCRIPTION |
| 1 | 4 | 120222 | Adapter 6mj-6mb90 |
| 2 | 2 | 120277 | Adapter 8mj-8mb |
| 3 | 2 | 120512 | Adapter 8mj-8mb-8mj |
| 4 | 4 | 120319 | Adapter 6mj-6mb |

| BED | HOSE TABLE | | | | | |
|---------|--------------|---------------|----------------|-----------------|-----------------|-----------------|
| | HOSE 1 (RED) | HOSE 2 (BLUE) | HOSE 3 (GREEN) | HOSE 4 (YELLOW) | HOSE 5 (ORANGE) | HOSE 6 (PURPLE) |
| A84X84 | 220766 | 220767 | 220765 | 220764 | 220751 | 220754 |
| A84X101 | 220753 | 220752 | 220756 | 220755 | 220751 | 220754 |
| A84X108 | 220782 | 220783 | 220769 | 220781 | 220751 | 220754 |
| A84X113 | 220786 | 220787 | 220785 | 220784 | 220751 | 220754 |
| A90X108 | 220801 | 220802 | 220800 | 220799 | 220751 | 220768 |
| A90X113 | 220771 | 220772 | 220770 | 220769 | 220751 | 220768 |
| A90X137 | 220790 | 220791 | 220789 | 220788 | 220751 | 220759 |
| A94X101 | 220762 | 220763 | 220761 | 220760 | 220751 | 220759 |
| A94X108 | 220775 | 220776 | 220774 | 220773 | 220751 | 220759 |
| A94X113 | 220771 | 220772 | 220770 | 220769 | 220751 | 220759 |
| A94X132 | 220776 | 220798 | 220797 | 220796 | 220751 | 220759 |
| A94X137 | 220790 | 220791 | 220789 | 220788 | 220751 | 220759 |
| A96X84 | 220794 | 220795 | 220793 | 220792 | 220751 | 220759 |
| A96X101 | 220779 | 220780 | 220778 | 220777 | 220751 | 220759 |
| A96X108 | 220775 | 220776 | 220774 | 220773 | 220751 | 220759 |
| A96X113 | 220771 | 220772 | 220770 | 220769 | 220751 | 220759 |
| A96X132 | 220776 | 220798 | 220797 | 220796 | 220751 | 220759 |
| A96X137 | 220790 | 220791 | 220789 | 220788 | 220751 | 220759 |

HOSE CHART (WITH COUPLERS)

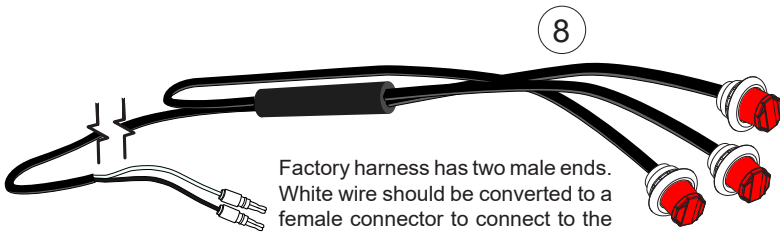
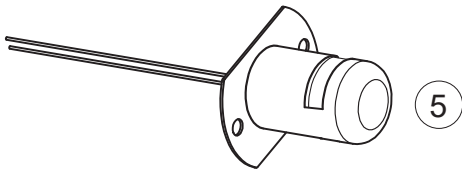
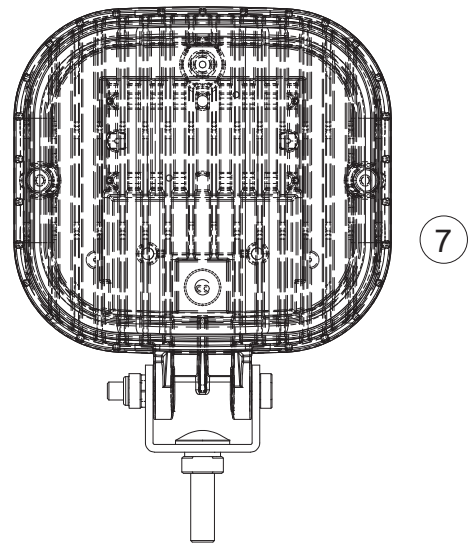
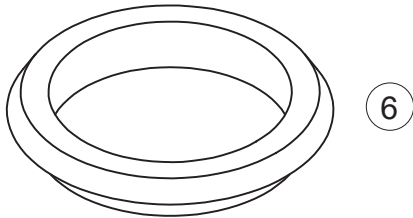
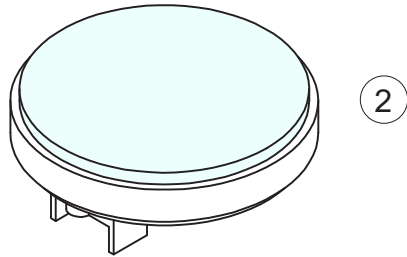
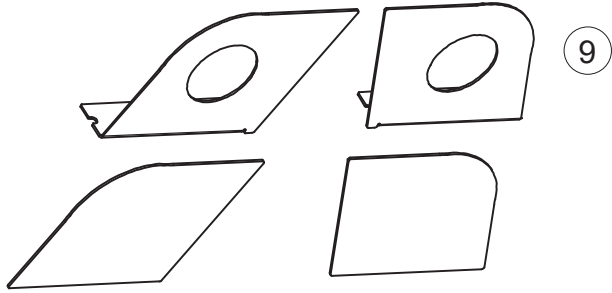
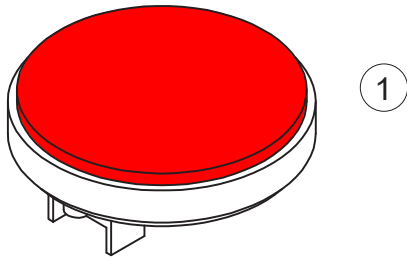


- When using couplers care must be taken to not mix oils with attachments. ISO 46 is recommended.
- Pump should only be ran continuously 2 minutes out of every 10 minutes.
- Do not use with large hydraulic cylinders where the differential volume between the rod end and the base end is larger than 0.5 Gallons. The pump reservoir capacity is only 0.87 Gallons and using couplers with large cylinders could lead to pump starvation.

| FITTING TABLE | | | |
|---------------|-----|--------|---------------------------|
| ITEM | QTY | PART# | DESCRIPTION |
| 1 | 4 | 120222 | Adapter 6mj-6mb90 |
| 2 | 2 | 120277 | Adapter 8mj-8mb |
| 3 | 2 | 120512 | Adapter 8mj-8mb-8mj |
| 4 | 8 | 120319 | Adapter 6mj-6mb |
| 5 | 2 | 120581 | Coupler, Female Orb |
| 6 | 2 | 120582 | Coupler, Male Orb |
| 7 | 2 | 120239 | Adapter 6mj-8mb (A94x113) |
| | 2 | 102131 | Clamps, Hose Positioning |
| | 2 | 112127 | Dust Caps |

| HOSE TABLE | | | | | | | | |
|------------|--------------|---------------|----------------|---------------|-----------------|----------------|-----------------|-----------------|
| BED | HOSE 1 (RED) | HOSE 2 (BLUE) | HOSE 3 (GREEN) | HOSE 4 (PINK) | HOSE 5 (YELLOW) | HOSE 6 (BROWN) | HOSE 7 (ORANGE) | HOSE 8 (PURPLE) |
| A84X101 | 220753 | 220752 | 220805 | 220807 | 220804 | 220806 | 220751 | 220754 |
| A94X101 | 220762 | 220763 | 220805 | 220807 | 220804 | 220806 | 220751 | 220759 |
| A94X108 | 220775 | 220776 | 220805 | 220807 | 220804 | 220806 | 220751 | 220759 |
| A94X113 | 220790 | 220791 | 220822 | 220754 | 220823 | 220807 | 220751 | 220759 |
| A94X132 | 220776 | 220798 | 220805 | 220807 | 220804 | 220806 | 220751 | 220759 |
| A94X137 | 220790 | 220791 | 220822 | 220754 | 220823 | 220807 | 220751 | 220759 |
| A96X84 | 220794 | 220795 | 220805 | 220807 | 220804 | 220806 | 220751 | 220759 |
| A96X101 | 220779 | 220780 | 220805 | 220807 | 220804 | 220806 | 220751 | 220759 |

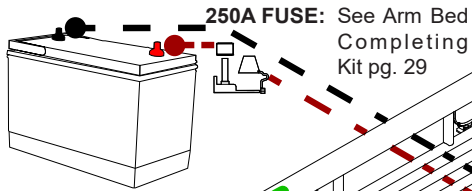
LIGHTS



Factory harness has two male ends. White wire should be converted to a female connector to connect to the 232157 harness.

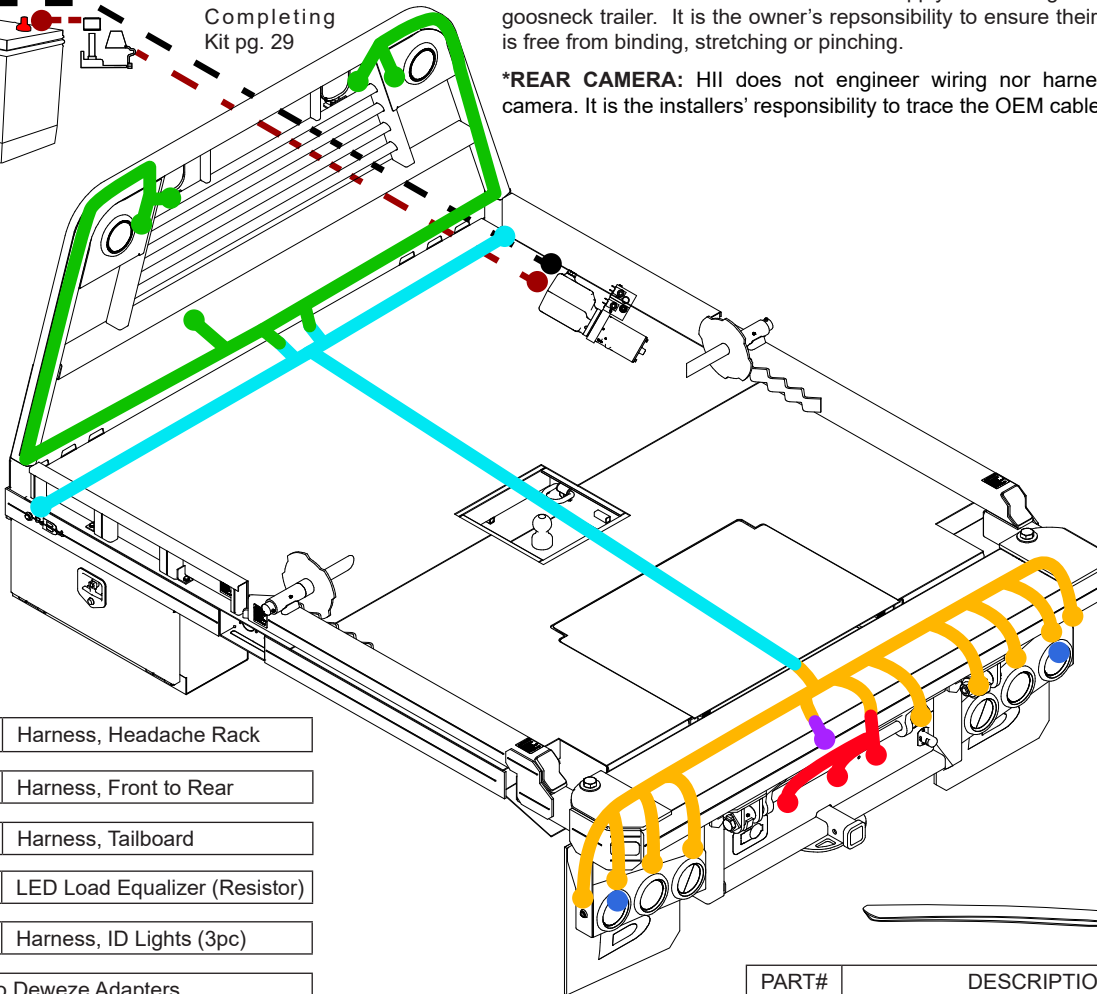
| LIGHTS | | | |
|--------|-----|--------|---------------------------------|
| ITEM | QTY | PART# | DESCRIPTION |
| 1 | 6 | 232144 | Light, LED 4" Red |
| 2 | 2 | 232145 | Light, LED 4" Clear |
| 3 | 2 | 232147 | Light, LED 3/4" Red |
| 4 | 2 | 232148 | Light, LED 3/4" Amber |
| 5 | 1 | 232188 | Light, Tag Clear |
| 6 | 8 | 232146 | Grommet, Light |
| 7 | 2 | 232167 | Light, Work |
| 8 | 1 | 232170 | Light Harness, LED 3/4" Red 3pc |
| 9 | 1 | 225034 | Kit, STT Light Brackets |

ELECTRICAL HARNESSES



***GOOSENECK POWER:** HII does not supply the cordage for powering a gooseneck trailer. It is the owner's responsibility to ensure their power cable is free from binding, stretching or pinching.

***REAR CAMERA:** HII does not engineer wiring nor harnesses for the camera. It is the installers' responsibility to trace the OEM cable to re-attach.

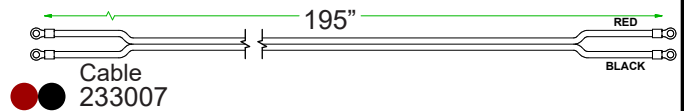


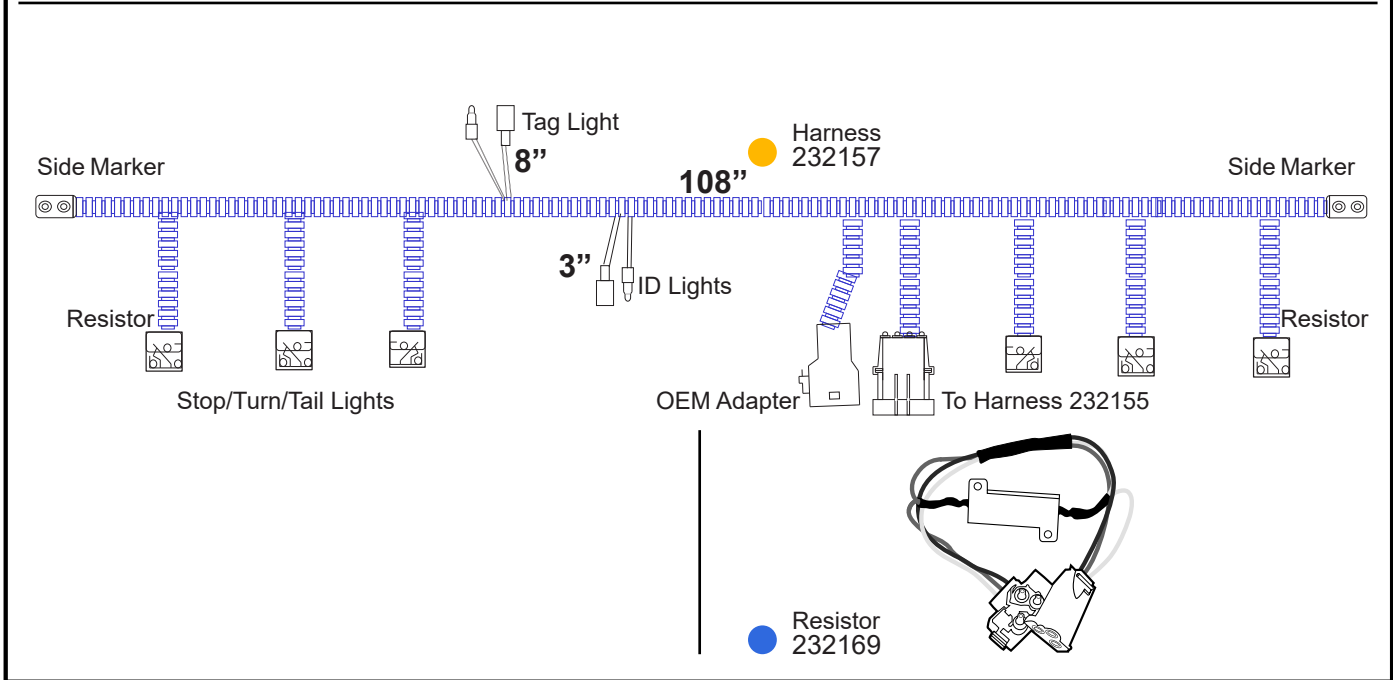
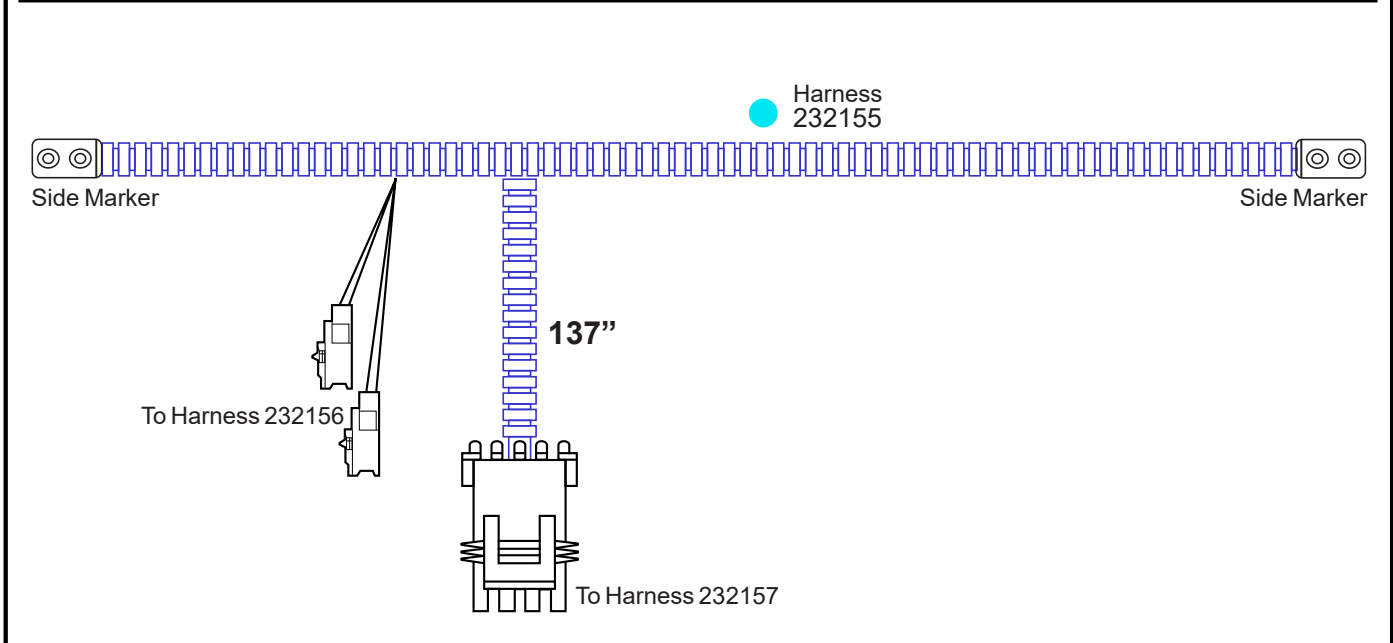
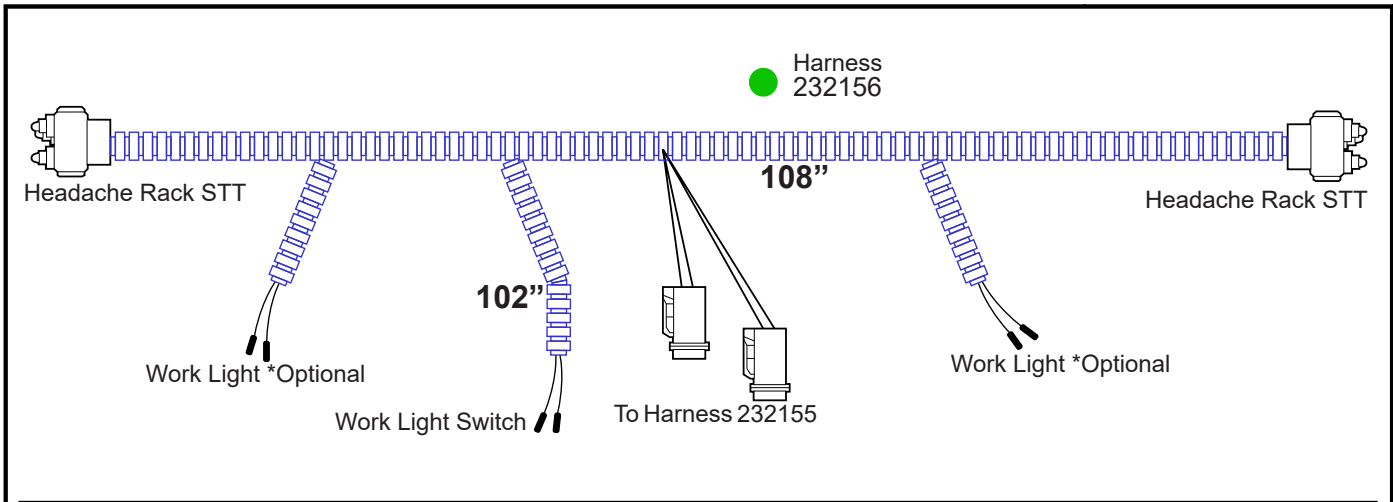
- 232156 Harness, Headache Rack
- 232155 Harness, Front to Rear
- 232157 Harness, Tailboard
- 232169 LED Load Equalizer (Resistor)
- 232170 Harness, ID Lights (3pc)
- OEM to Deweze Adapters
- E/H Cables (see E/H section)

| PART# | DESCRIPTION |
|--------|--------------------|
| 112084 | Edge Molding |
| 112125 | Grommet, Nylon 1/4 |

● ● EH Battery & Ground 2ga cable

Factory harness has two male ends. White wire should be converted to a female connector to connect to the 232157 harness.



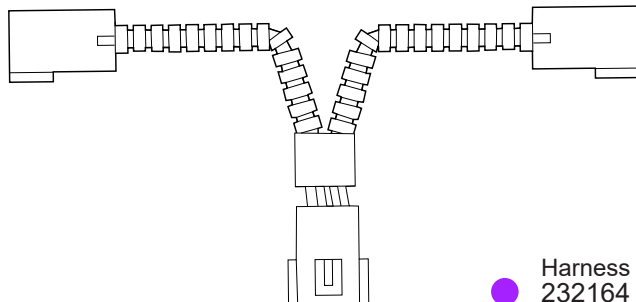
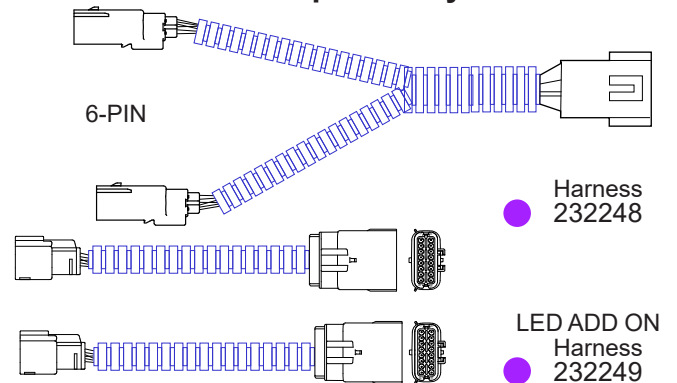
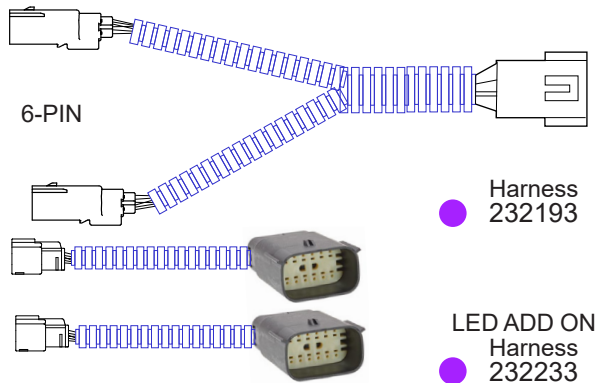


OEM TO BUTLER ADAPTERS

| PART# | | DESCRIPTION | MAKE | TYPE | START YR | END YR |
|--------|-------|---|-------|------|----------|--------|
| 232161 | FORD | Harness Adapter, FD CC | Ford | CC | 1999 | |
| 232176 | | Harness Adapter, FD Box Delete, 2008-10 | Ford | BTO | 2008 | 2010 |
| 232160 | | Harness Adapter, FD Box Delete, 2011-16 | Ford | BTO | 2011 | 2016 |
| 232177 | | Harness Adapter, FD Box Delete, 2017-19 | Ford | BTO | 2017 | 2019 |
| 232185 | | Harness Adapter, FD Box Delete, 2020-22 | Ford | BTO | 2020 | 2022 |
| 232192 | | BLIS Add On for 232185 (Cut purple & red wires from 20 pin, splice into 232192) | Ford | BLIS | 2020 | 2022 |
| 232234 | | Harness Adapter, FD Box Delete W/BLIS 23+ | Ford | BTO | 2023 | |
| 232174 | CHEVY | Harness Adapter, GM 02-14 w/3rd Brake | GM | ALL | 2002 | 2014 |
| 232163 | | Harness Adapter, GM 02-14 No 3rd Brake | GM | ALL | 2002 | 2014 |
| 232158 | | Harness Adapter, GM 2015 ONLY | GM | ALL | 2015 | 2015 |
| 232159 | | Harness Adapter, GM 2016-2019 | GM | ALL | 2016 | 2019 |
| 232179 | | Harness Adapter, 2019 MD Dty 4500-6500 | GM | ALL | 2019 | |
| 232187 | | Harness Adapter, GM CC 2020+ | GM | CC | 2020 | |
| 232178 | | Harness Adapter, 2020 GM 2500-3500 | GM | ALL | 2020 | |
| 232238 | | Harness Adapter, GM BTO | GM | BTO | 2024 | |
| 232164 | DODGE | Harness Adapter, Ram CC | Dodge | CC | 1999 | |
| 232193 | | Harness Adapter, Ram Box Delete (STD) | Dodge | BTO | 2019 | 2026 |
| 232233 | | Add to 232193 Harness Adapter, Ram Box Delete (LED) | Dodge | BTO | 2019 | 2026 |
| 232248 | | Harness Adapter, Ram Box Delete (STD) | Dodge | BTO | 2026 | |
| 232249 | | Add to 232248 Harness Adapter, Ram Box Delete (LED) | Dodge | BTO | 2026 | |
| 232162 | | Harness Adapter, Generic | ALL | ALL | 1999 | |

DODGE

Deweze DOES NOT provide a solution for FAST FLASHING lights. Customers can source LOAD EQUALIZERS independantly.

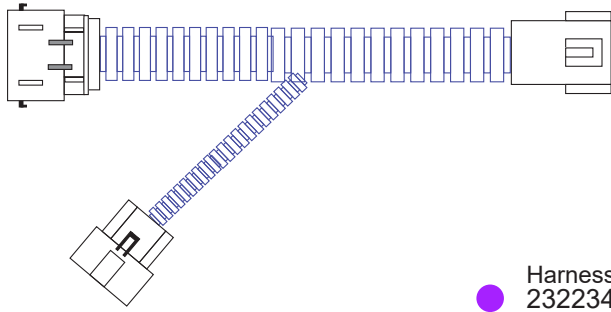


GENERIC (BLUNT CUT)

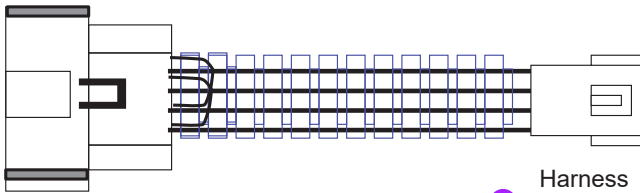


FORD

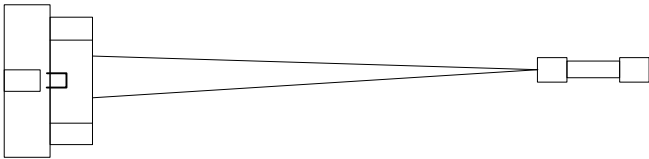
● OEM to Deweze Adapters



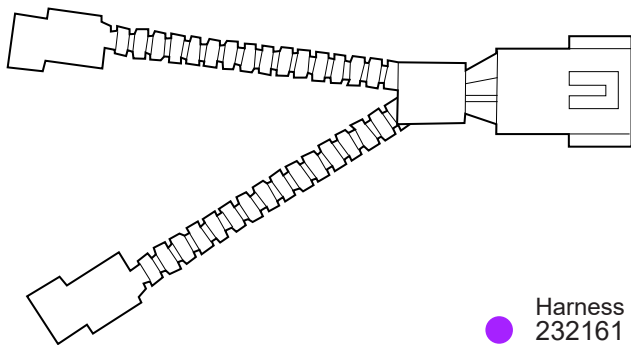
● Harness
232234



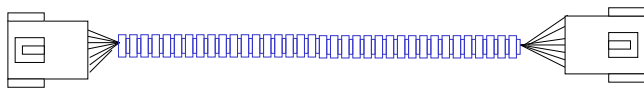
● Harness
232185
232177
232160



● Harness
232192



● Harness
232161

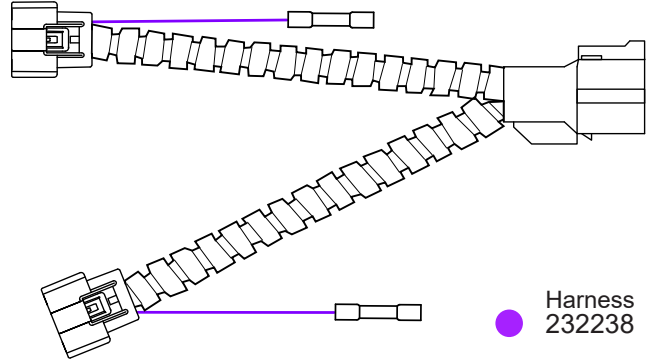


● Harness
232176

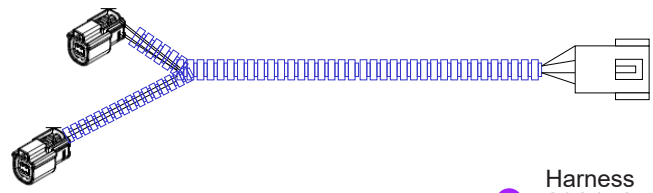
CHEVY

● OEM to Deweze Adapters

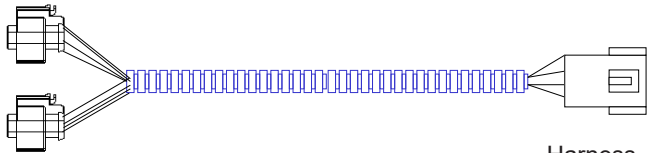
Purple wires only for fast flashing issue. See pg. 37



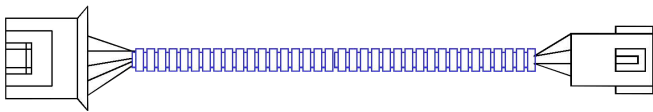
● Harness
232238



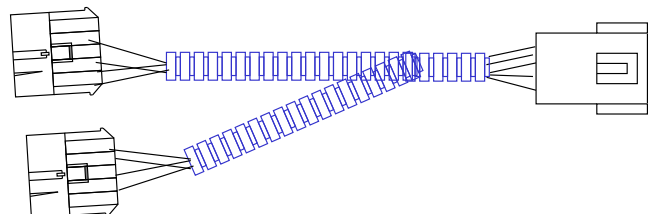
● Harness
232178
232159
232187



● Harness
232158

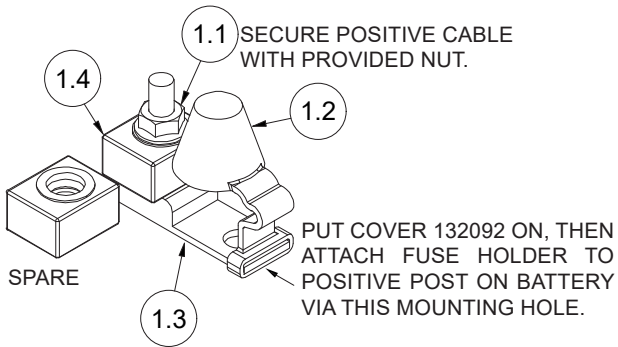
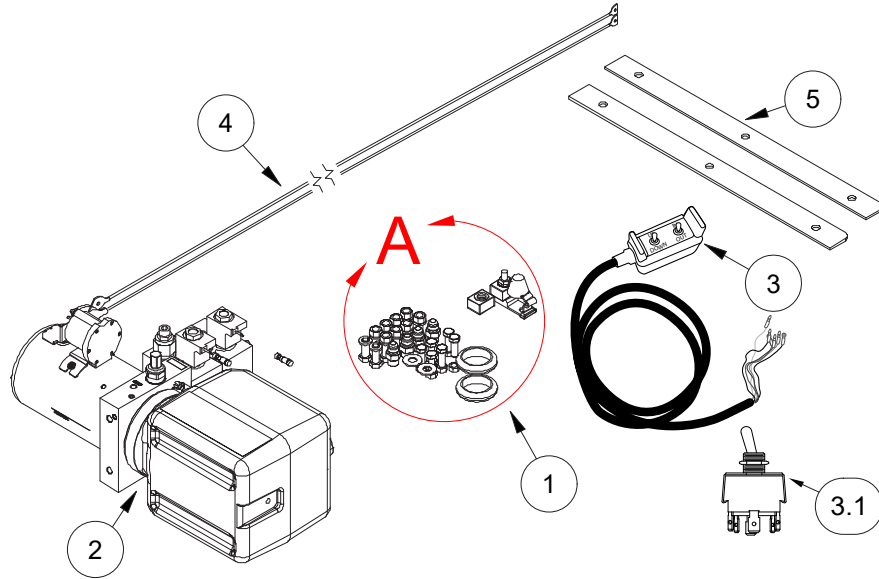


● Harness
232174
232163

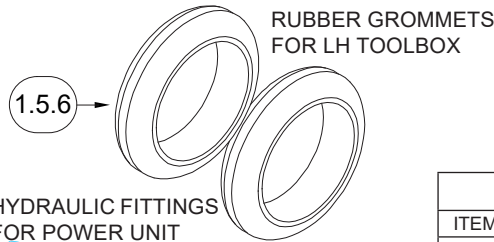


● Harness
232179

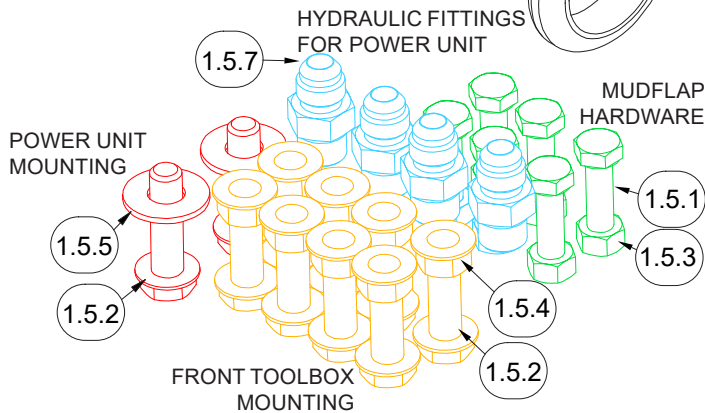
ARM BED COMPLETING KIT



DETAIL A
HARDWARE KIT: 205410

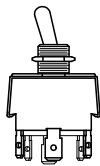
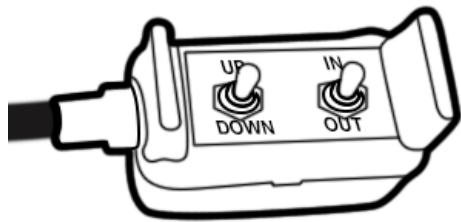


BOLT KIT: 205160



| Parts List | | | KIT: 205250 |
|------------|-----|--------|-------------------------------------|
| ITEM | QTY | PART # | DESCRIPTION |
| 1 | 1 | 205410 | Kit, Hardware (Arm Bed) |
| 1.1 | 1 | 110141 | Nut, M8 X 1.25 Wizflange |
| 1.2 | 1 | 132092 | Fuse Cover, Buss Cfcover-1r |
| 1.3 | 1 | 132093 | Fuse Holder, Buss Cfbar1-M8xsp |
| 1.4 | 2 | 132180 | Fuse 250 Amp, Buss Mrbf-250 |
| 1.5 | 1 | 205160 | Kit, Bolt (Arm Bed) |
| 1.5.1 | 6 | 110423 | Bolt, 5/16-18 X 1.0 |
| 1.5.2 | 10 | 110440 | Bolt, 3/8-16 X 1, Wiz Flange |
| 1.5.3 | 6 | 110608 | Nut, 5/16-18 |
| 1.5.4 | 8 | 110645 | Nut, 3/8-16 Wiz Flange |
| 1.5.5 | 2 | 110676 | Washer, 3/8" Flat Standard |
| 1.5.6 | 2 | 112123 | Grommet, Rubber 1 1/2 X 1/2 Round |
| 1.5.7 | 4 | 120319 | Adapter, 6mj-6mb |
| 2 | 1 | 222074 | Assembly, Power Unit (High/Arm Bed) |
| 3 | 1 | 232150 | Hand Control, AB, Two Switch |
| 3.1 | 1 | 232171 | Switch, AB Hand Control |
| 4 | 1 | 233007 | Kit, Power And Ground Cables, Long |
| 5 | 2 | 281265 | Bracket, Mudflap, Painted |

CONTROLS: CORDED & WIRELESS

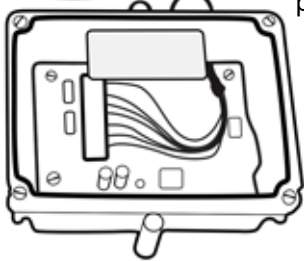


| CORDED REMOTE | | |
|---------------|--------|--------------------------------|
| QTY | PART # | DESCRIPTION |
| 1 | 232150 | Wired, Hand Control Two Switch |
| 2 | 232171 | Switch, AB Hand Control |

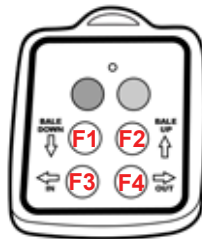


*Receiver NOT SOLD separately. Must buy kit.

Transmitter can be purchased individually.



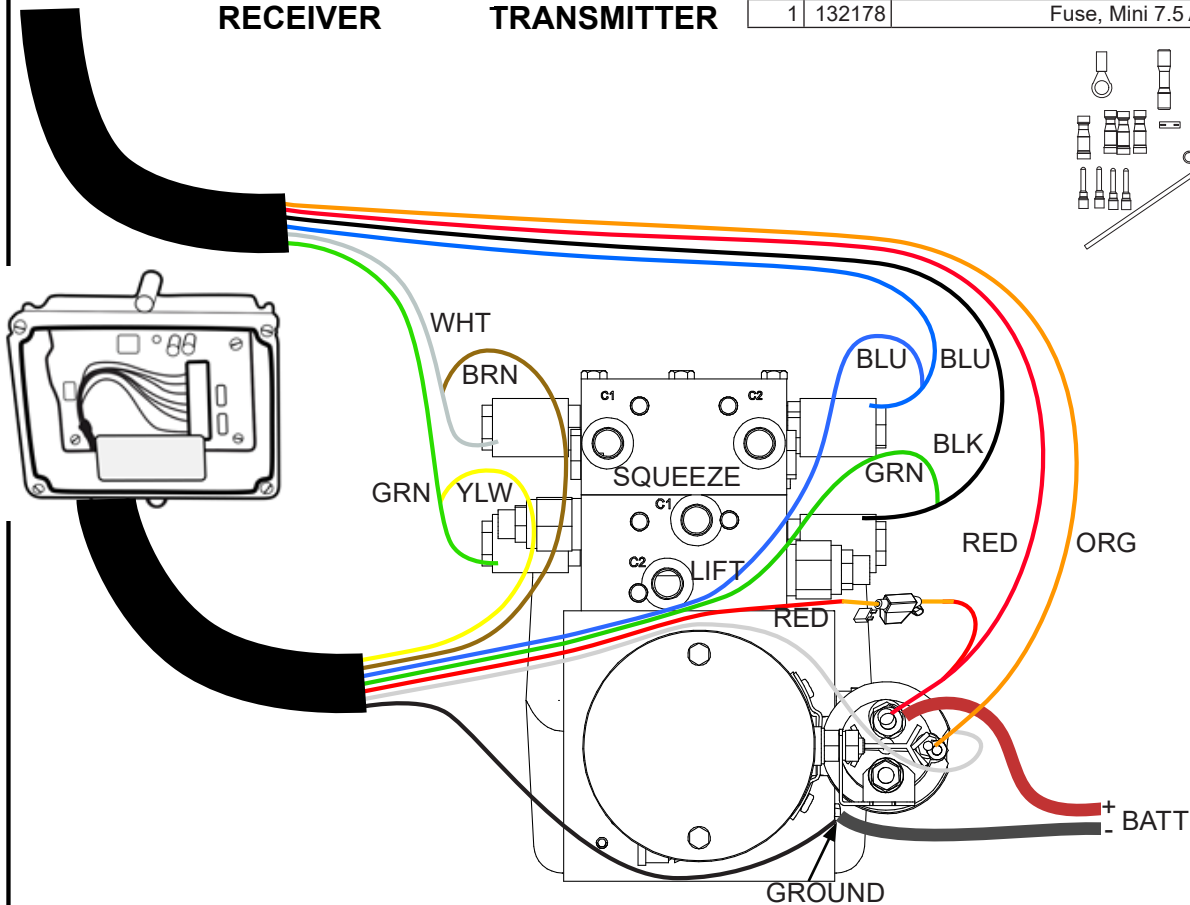
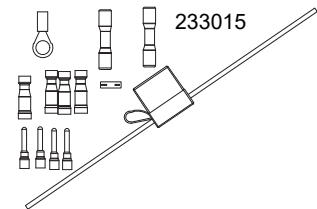
RECEIVER



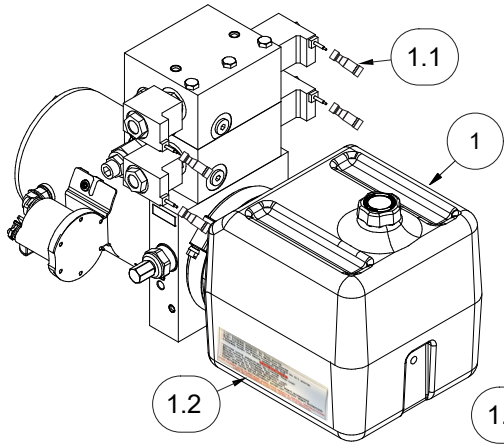
TRANSMITTER

| WIRELESS REMOTE | | |
|-----------------|--------|--|
| QTY | PART # | DESCRIPTION |
| 1 | 233008 | *RECEIVER/TRANSMITTER |
| 1 | 232166 | Transmitter |
| 1 | 233016 | Receiver/Transmitter Assy (new installs) |

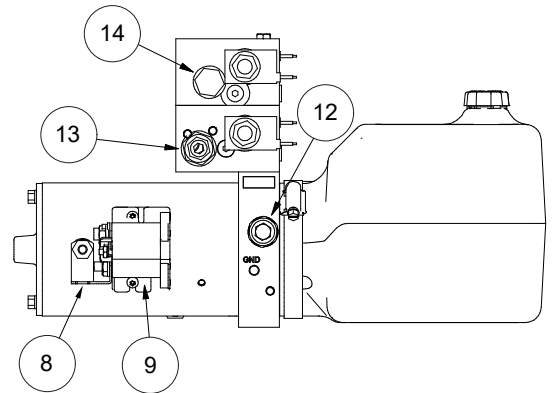
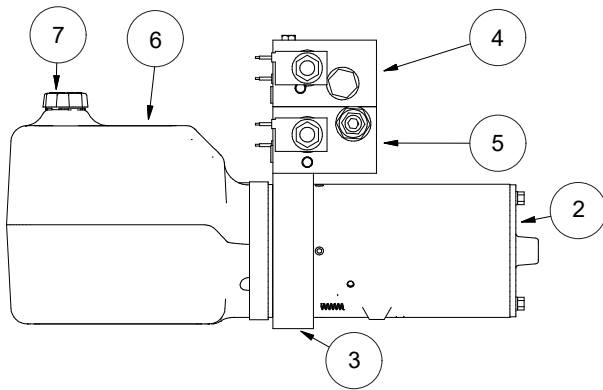
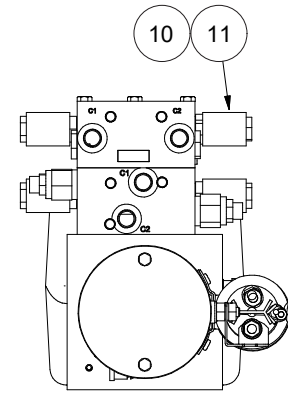
| WIRELESS KIT (FIRST TIME INSTALL) KIT: 233016 | | |
|---|--------|--|
| QTY | PART # | DESCRIPTION |
| 1 | 233008 | Transmitter & Receiver, 4 Function Lodar |
| 1 | 233015 | Kit, Wireless Hardware (Arm Bed) |
| 1 | 110308 | Bolt, 5/16-18 X 0.5, Gr8 |
| 2 | 110344 | Screw, 8-32x1.5 Pan Head Phps |
| 2 | 110345 | Nut, 8-32 Lock Nylon |
| 1 | 132001 | Fuse Holder, Atc, 14 Ga., Mini |
| 2 | 132147 | Terminal, Butt Connect 16-14, Heat Shink |
| 4 | 132165 | Terminal, Female Bullet, 16-14, Nylon |
| 4 | 132170 | Terminal, Male Bullet, 16-14, Nylon |
| 1 | 132178 | Fuse, Mini 7.5 Amp |



E/H UNIT



⚠ WARNING ⚠
 This battery area/compartment is designed for the use of non-vented batteries only. Do not place a battery that requires venting into this area/compartment. Vented batteries can release poisonous and flammable gases. Can lead to a fire or explosion and result in death or serious injury.

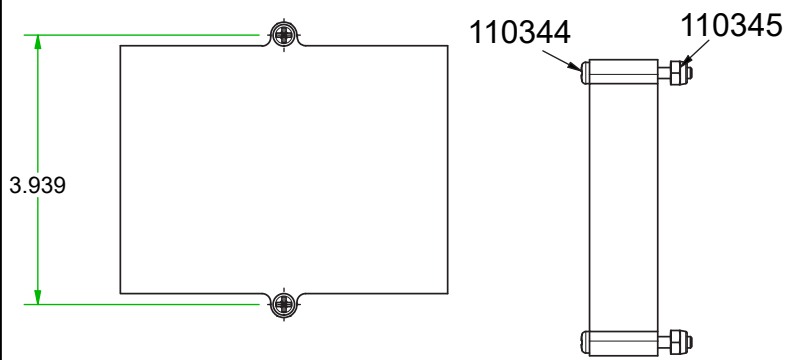
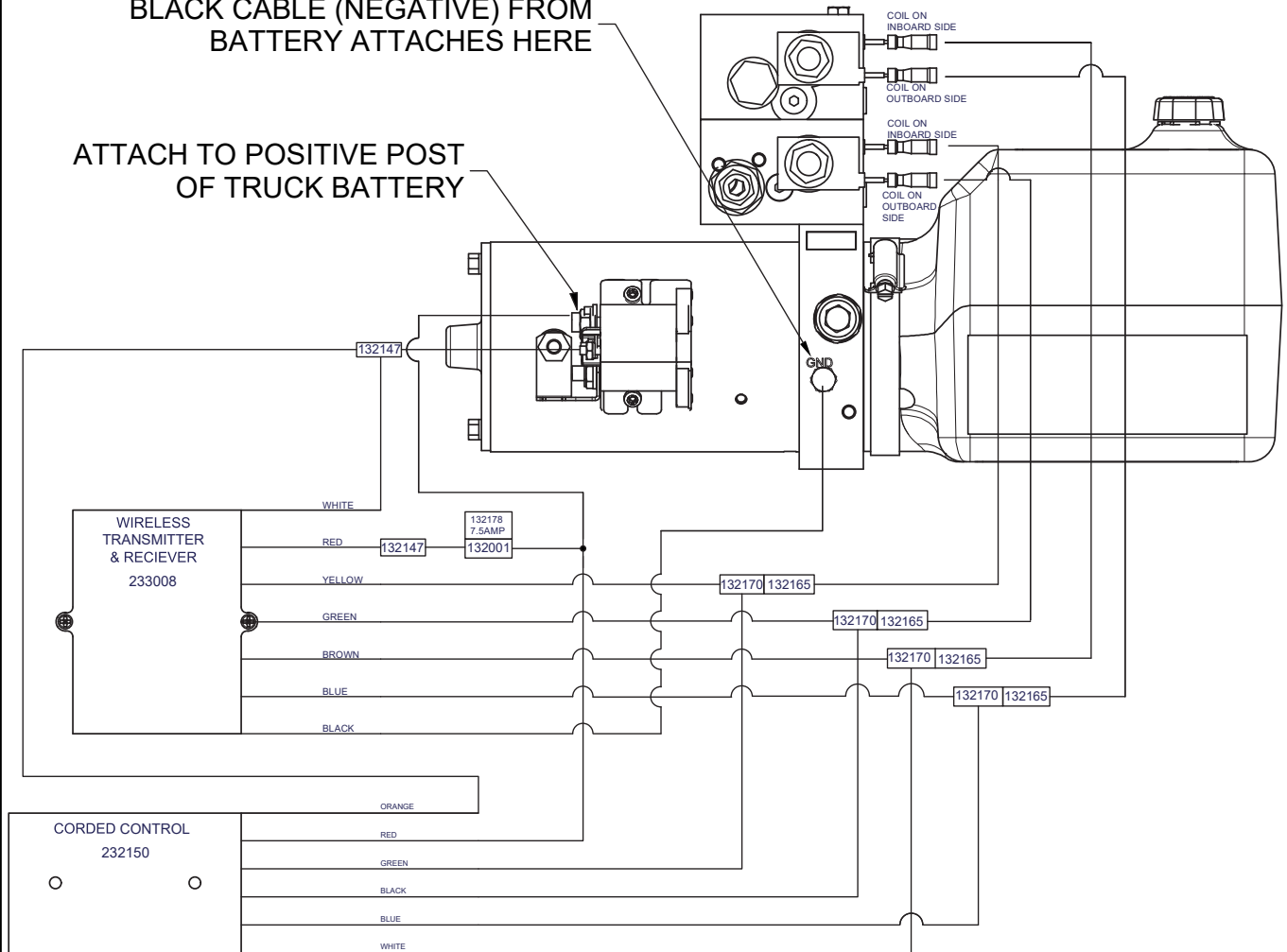


| Parts List | | | KIT: 222074 |
|------------|-----|--------|--|
| ITEM | QTY | PART # | DESCRIPTION |
| 1 | 1 | 222074 | E/H Unit, Bucher 3530-0179 |
| 1.1 | 4 | 132165 | Terminal, Female Bullet, 16-14, Nylon |
| 1.2 | 1 | 202141 | Decal, 2x6 Arm Bed Remote Instructions |
| 1.3 | 1 | 202180 | Decal, Non-Vented Battery Warning. |
| 2 | 1 | 222072 | Motor, Electric Ab 12v |
| 3 | 1 | 222094 | Pump, Hydraulic Ab |
| 4 | 1 | 222090 | Valve, Squeeze Ab |
| 5 | 1 | 222091 | Valve, Lift Ab |
| 6 | 1 | 212034 | Tank, Hydraulic Bucher |
| 7 | 1 | 212044 | Cap, Hydraulic Tank Bucher |
| 8 | 1 | 232180 | Strap, Solenoid Connecting |
| 9 | 1 | 232089 | Solenoid, 3 Pole, Heavy Duty |
| 10 | 4 | 222088 | Valve, Cartridge Ab |
| 11 | 4 | 212033 | Valve, Coil Butler |
| 12 | 1 | 222104 | Valve, Ab Relief |
| 13 | 1 | 222105 | Valve, Ab Counterbalance |
| 14 | 1 | 222089 | Check Valve, Ab And Sb |

E/H ELECTRICAL SCHEMATIC

BLACK CABLE (NEGATIVE) FROM BATTERY ATTACHES HERE

ATTACH TO POSITIVE POST OF TRUCK BATTERY

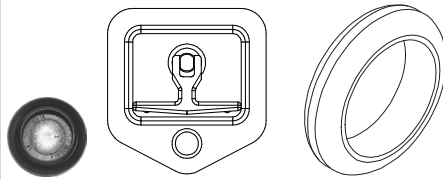


- MOUNT TRANSMITTER AS FAR AS FEASIBLE IN UPPER RH CORNER OF PASSENGER SIDE TOOLBOX.
- DRILL Ø 0.20 HOLES PER NOTED DIMENSIONS
- USE HARDWARE KIT 233015 TO MOUNT

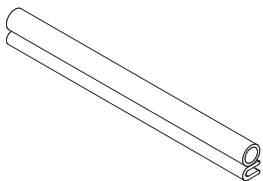
TOOLBOXES

| FRONT TOOLBOX | | | REAR TOOLBOX | | |
|---------------|-----------|-----------|--------------|-----------|-----------|
| SIZE | LH PART # | RH PART # | SIZE | LH PART # | RH PART # |
| 18" | 282004 | 282023 | 20" | 282017 | 282018 |
| 20" | 282005 | 282006 | 24" | 282019 | 282020 |
| 30" | 282001 | 282002 | | | |
| 36" | 282008 | 282022 | | | |

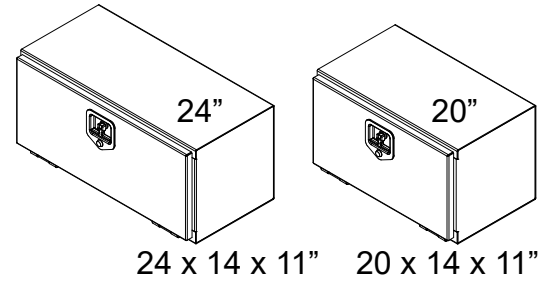
| QTY | PART # | DESCRIPTION |
|-------|--------|-----------------------------|
| Chart | 102030 | Toolbox Seal (sold by foot) |
| 1 | 102053 | Plug, Button 1.00 |
| 1 | 282011 | Toolbox Latch |
| 8 | 110440 | Bolt, 3/8-16 x 1 GR5 Zn |
| 8 | 110676 | Washer 3/8 Lock Zn |
| 8 | 110645 | Nut, 3/8-16 GR5 Zn |
| 2 | 112123 | Grommet, Ruber 1 1/2 ID |



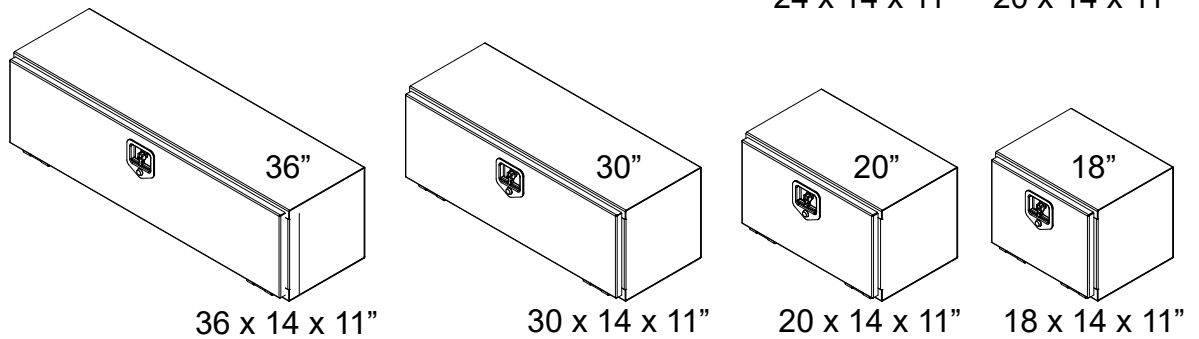
| TBX Size | Seal (feet) |
|----------|-------------|
| 18 | 5 |
| 20 | 5.5 |
| 24 | 6 |
| 30 | 7 |
| 36 | 8 |



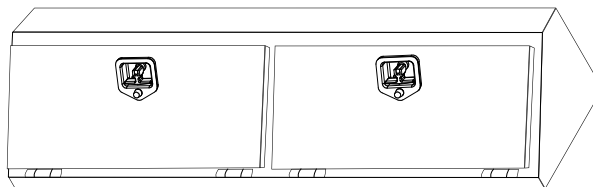
REAR TOOLBOXES



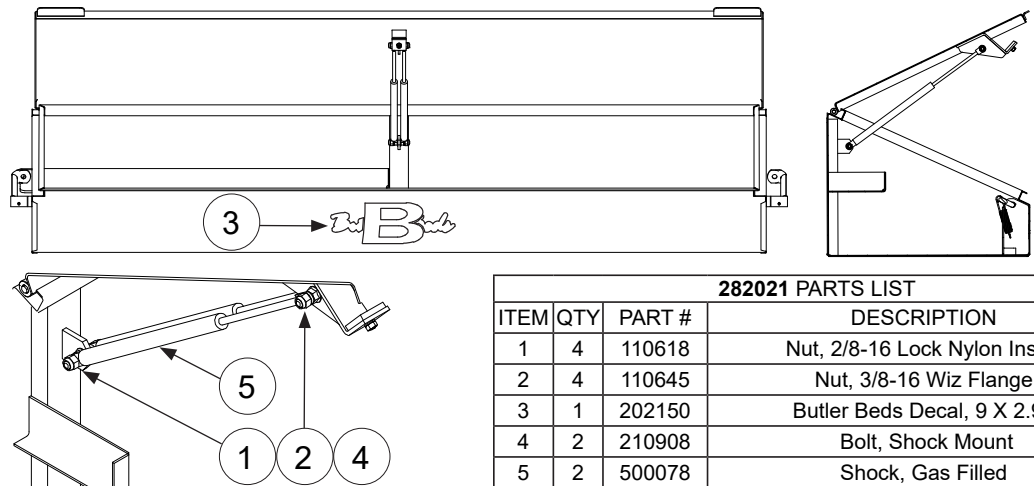
FRONT TOOLBOXES



282003
DUAL LID
72 x 12.8 x 16"

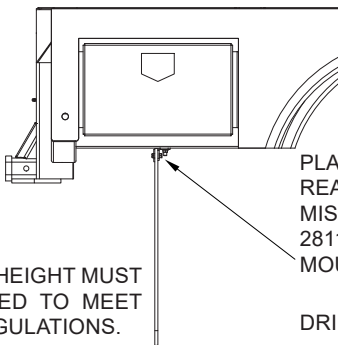
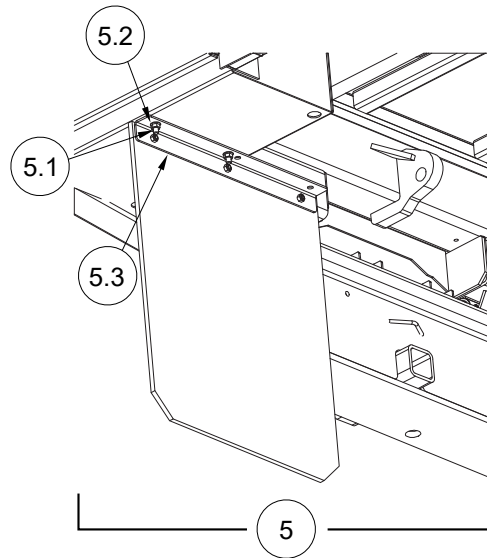
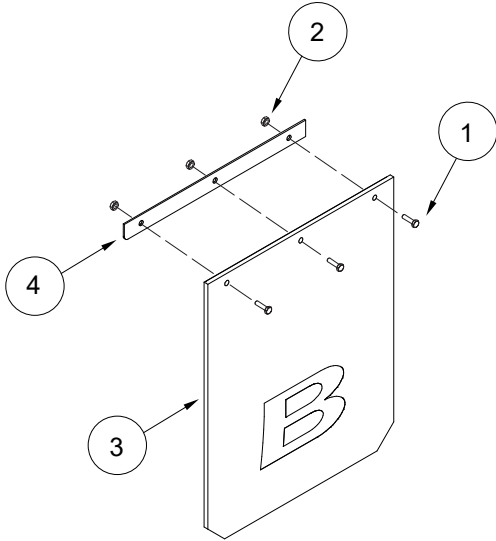


282021
SINGLE LID
79 x 21.5 x 17.6"



| 282021 PARTS LIST | | | |
|-------------------|-----|--------|-------------------------------|
| ITEM | QTY | PART # | DESCRIPTION |
| 1 | 4 | 110618 | Nut, 2/8-16 Lock Nylon Insert |
| 2 | 4 | 110645 | Nut, 3/8-16 Wiz Flange |
| 3 | 1 | 202150 | Butler Beds Decal, 9 X 2.97 |
| 4 | 2 | 210908 | Bolt, Shock Mount |
| 5 | 2 | 500078 | Shock, Gas Filled |

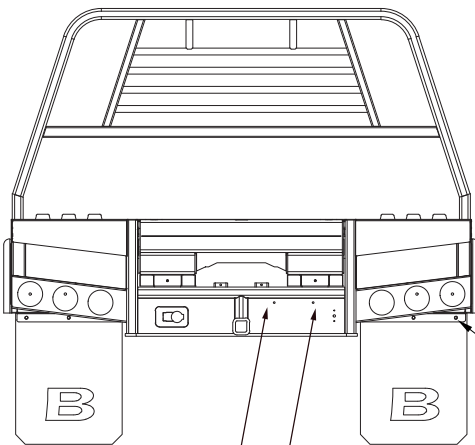
MUDFLAPS



MUDFLAP HEIGHT MUST BE TRIMMED TO MEET LOCAL REGULATIONS.

PLACE MUDFLAP ON BOTTOM SIDE OF REAR BOX. PLACE APPROPRIATELY TO MISS EXHAUST SYSTEM. USE BRACKET 281125 AS A TEMPLATE FOR DRILLING MOUNTING HOLES.

DRILL HOLES $\varnothing 0.438$ (7/16 INCH)



LICENSE PLATE HOLES ARE 3/8" NON-THREADED.

MOUNT MUDFLAP FLUSH WITH EDGE OF TOOLBOX

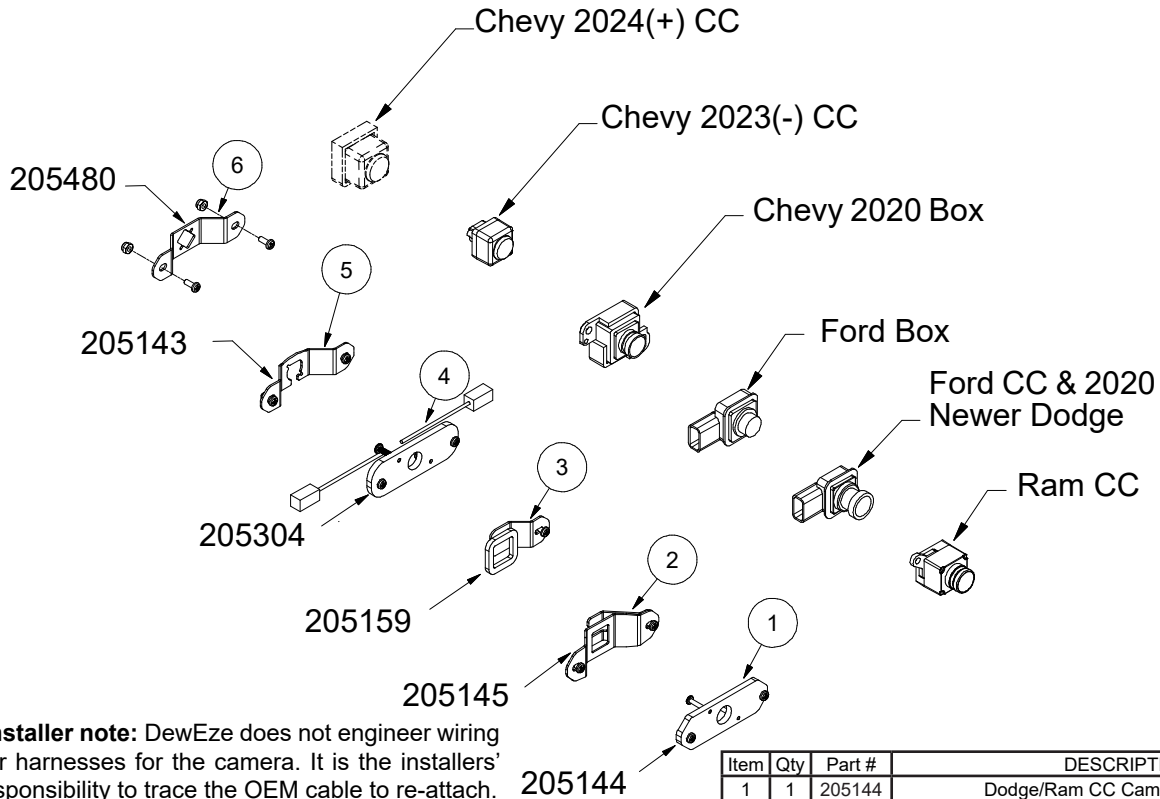
PARTS LIST

| ITEM | QTY | PART # | DESCRIPTION |
|------|-----|--------|--|
| 1 | 6 | 110423 | Bolt, 5/16-18 X 1 Gr5 Zinc |
| 2 | 6 | 110608 | Nut, 5/16-18 Gr5 Zinc |
| 3 | 2 | 202137 | Mudflap, Butler, 24" (sold individually) |
| 4 | 2 | 281265 | Plate, Mudflap, 19 X 1.5, 3 Holes |
| 5 | 1 | 205382 | Kit, Mudflap Mount |
| 5.1 | 4 | 110440 | Bolt, 3/8-16 X 1, Wiz Flange |
| 5.2 | 4 | 110645 | Nut, 3/8-16 Wiz Flange |
| 5.3 | 2 | 281125 | Bracket, Mud Flap |

BED MOUNTING KITS

| PART# | DESCRIPTION | MAKE | TYPE | START | END |
|--------|--|-------|------|-------|---------|
| 205162 | Chevy General | GM | BD | 1990 | 2010 |
| 205356 | Chevy BD | GM | BD | 2011 | Current |
| 205365 | Chevy C&C | GM | C&C | 1990 | 2010 |
| 205366 | Chevy C&C | GM | C&C | 2011 | Current |
| 205484 | Chevy C&C, 45-6500 60" CA | GM | C&C | 2019 | Current |
| 205485 | Chevy C&C, 84" CA | GM | C&C | 2011 | Current |
| 205490 | Chevy C&C, 45-6500 84" CA | GM | C&C | 2019 | Current |
| 205491 | Chevy BD | GM | BD | 2020 | Current |
| 205493 | Chevy Short BD | GM | BD | 2000 | 2010 |
| 205494 | Chevy C&C, 84" CA | GM | C&C | 2000 | 2010 |
| 205165 | Dodge BD | Dodge | BD | 1994 | 2002 |
| 205362 | Dodge BD | Dodge | BD | 2003 | 2013 |
| 205359 | Dodge BD, 3500 | Dodge | BD | 2014 | Current |
| 205360 | Dodge BD, 2500 | Dodge | BD | 2014 | Current |
| 205361 | Dodge Short BD | Dodge | BD | 2014 | Current |
| 205175 | Dodge C&C | Dodge | C&C | 2007 | Current |
| 205492 | Dodge C&C, 84" CA | Dodge | C&C | 2007 | Current |
| 205363 | Ford Long Bed, BD | Ford | BD | 1998 | 2016 |
| 205364 | Ford Short Bed, BD | Ford | BD | 1998 | 2016 |
| 205355 | Ford BD | Ford | BD | 2017 | Current |
| 205357 | Ford C&C | Ford | C&C | 1999 | 2016 |
| 205358 | Ford C&C | Ford | C&C | 2017 | Current |
| 205431 | Add-on for 205358 with outboard DEF tank | Ford | C&C | 2017 | Current |

REAR VIEW CAMERA MOUNTING KITS *



***Installer note:** DewEze does not engineer wiring nor harnesses for the camera. It is the installers' responsibility to trace the OEM cable to re-attach.

***Mount Disclaimer:** These mounting kits were designed for the most common mounting-to-camera. Manufacturers change camera styles & mountings even within the same year. Use best practices to modify if need be.

| Item | Qty | Part # | DESCRIPTION |
|------|-----|--------|--|
| 1 | 1 | 205144 | Dodge/Ram CC Camera Mount Kit |
| 2 | 1 | 205145 | Ford Camera & Dodge 2020+ Mount Kit |
| 3 | 1 | 205159 | Ford Box Take-Off Camera Mount Kit |
| 4 | 1 | 205304 | Chevy/ GM 2020 Box Take-Off Camera Mount Kit |
| 5 | 1 | 205143 | Chevy/GM CC 2023- Camera Mount Kit |
| 6 | 1 | 205480 | Chevy/GM CC 2024+ Camera Mount Kit |
| 7 | 1 | 261343 | Camera Mount Weldment |

BED LENGTHS FOR CAKE FEEDERS

(HEADACHE RACK TO GOOSENECK WELL)

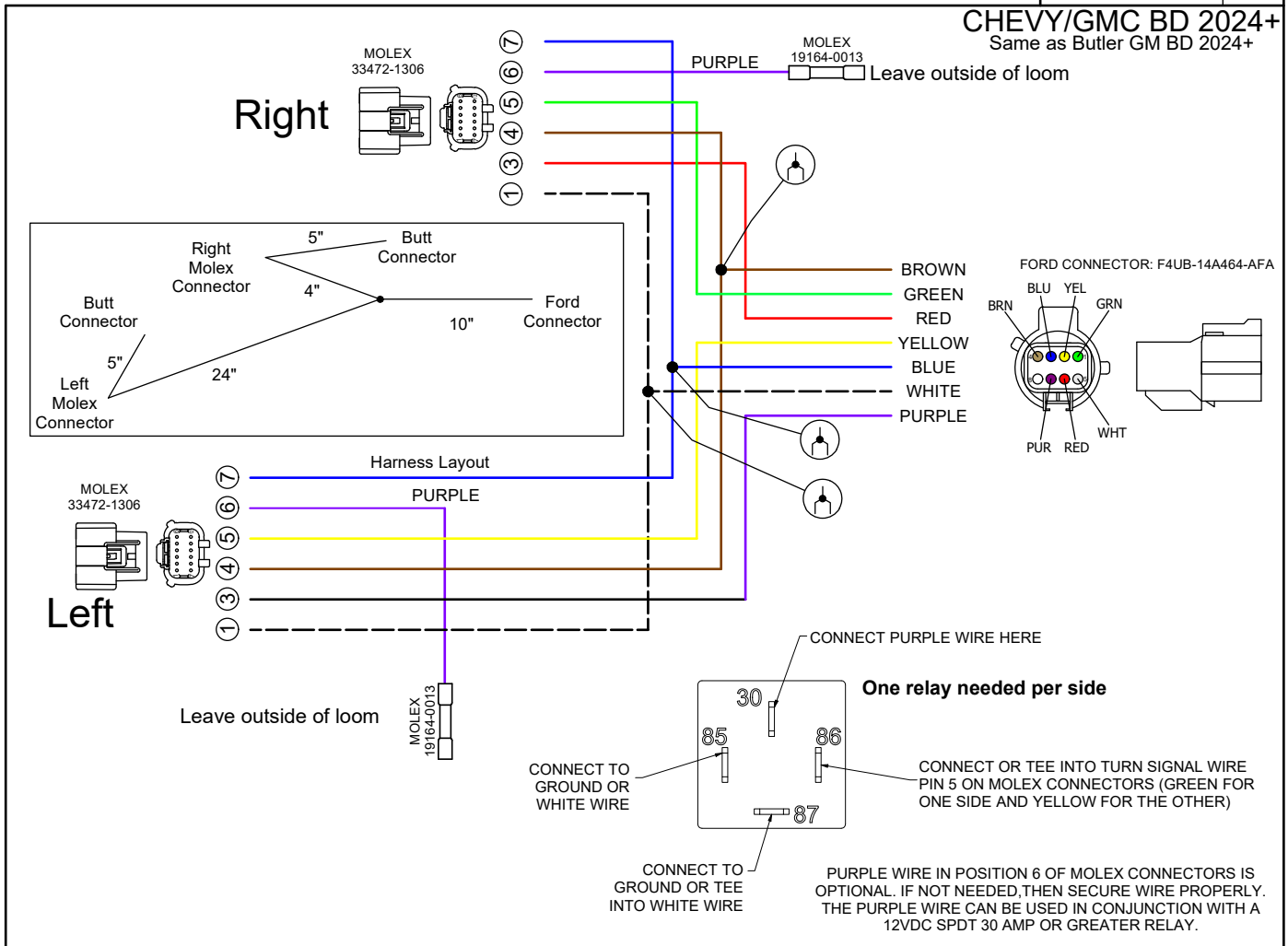
| Model Name | Type | Width | Length | Headache Rack to Front of Gooseneck Well Door |
|------------|---------|-------|--------|---|
| A84X84 | arm | 84 | 84 | 24 |
| A84X101 | arm | 84 | 101 | 41 |
| A84X108 | arm | 84 | 108 | 46.25 |
| A84X113 | arm | 84 | 113 | 51.25 |
| A90X108 | arm | 90 | 108 | 46.25 |
| A90X113 | arm | 90 | 113 | 51.25 |
| A90X137 | arm | 90 | 137 | 75.25 |
| A94X84 | arm | 94 | 84 | 24 |
| A94X101 | arm | 94 | 101 | 41 |
| A94X108 | arm | 94 | 108 | 46.25 |
| A94X113 | arm | 94 | 113 | 51.25 |
| A94X132 | arm | 94 | 132 | 70.25 |
| A94X137 | arm | 94 | 137 | 75.25 |
| A96X84 | arm | 96 | 84 | 24 |
| A96X101 | arm | 96 | 101 | 41 |
| A96X108 | arm | 96 | 108 | 46.25 |
| A96X113 | arm | 96 | 113 | 51.25 |
| A96X132 | arm | 96 | 132 | 70.25 |
| A96X137 | arm | 96 | 137 | 75.25 |
| S80X86 | spike | 80 | 86 | 24 |
| S80X102 | spike | 80 | 102 | 41 |
| S80X110 | spike | 80 | 110 | 46.25 |
| S80X115 | spike | 80 | 115 | 51.25 |
| S84X86 | spike | 84 | 86 | 24 |
| S84X102 | spike | 84 | 102 | 41 |
| S84X110 | spike | 84 | 110 | 46.25 |
| S84X115 | spike | 84 | 115 | 51.25 |
| S90X110 | spike | 90 | 110 | 46.25 |
| S90X115 | spike | 90 | 115 | 51.25 |
| S90X139 | spike | 90 | 139 | 75.25 |
| S94X86 | spike | 94 | 86 | 24 |
| S94X102 | spike | 94 | 102 | 41 |
| S94X110 | spike | 94 | 110 | 46.25 |
| S94X115 | spike | 94 | 115 | 51.25 |
| S94X134 | spike | 94 | 134 | 70.25 |
| S94X139 | spike | 94 | 139 | 75.25 |
| S96X86 | spike | 96 | 86 | 24 |
| S96X102 | spike | 96 | 102 | 41 |
| S96X110 | spike | 96 | 110 | 46.25 |
| S96X115 | spike | 96 | 115 | 51.25 |
| S96X134 | spike | 96 | 134 | 70.25 |
| S96X139 | spike | 96 | 139 | 75.25 |
| R80X86 | regular | 80 | 86 | 24 |
| R80X102 | regular | 80 | 102 | 41 |
| R80X110 | regular | 80 | 110 | 46.25 |
| R80X115 | regular | 80 | 115 | 51.25 |
| R84X86 | regular | 84 | 86 | 24 |
| R84X102 | regular | 84 | 102 | 41 |
| R84X110 | regular | 84 | 110 | 46.25 |
| R84X115 | regular | 84 | 115 | 51.25 |
| R90X110 | regular | 90 | 110 | 46.25 |
| R90X115 | regular | 90 | 115 | 51.25 |
| R90X139 | regular | 90 | 139 | 75.25 |
| R94X86 | regular | 94 | 86 | 24 |
| R94X102 | regular | 94 | 102 | 41 |
| R94X110 | regular | 94 | 110 | 46.25 |
| R94X115 | regular | 94 | 115 | 51.25 |
| R94X134 | regular | 94 | 134 | 70.25 |
| R94X139 | regular | 94 | 139 | 75.25 |
| R96X86 | regular | 96 | 86 | 24 |
| R96X102 | regular | 96 | 102 | 41 |
| R96X110 | regular | 96 | 110 | 46.25 |
| R96X115 | regular | 96 | 115 | 51.25 |
| R96X134 | regular | 96 | 134 | 70.25 |
| R96X139 | regular | 96 | 139 | 75.25 |

SERVICE TROUBLESHOOTING

232238

REV: A

CHEVY/GMC BD 2024+
Same as Butler GM BD 2024+



NOTES

Harper Industries, Inc.
151 E. Highway 160
Harper, KS 67058

Telephone: 620-896-7381
Toll-Free: 800-835-1042
Fax: 620-896-7129

Website: www.butlerbeds.com

E-mail: info@butlerbeds.com